

## Norwegian Refugee Council (NRC) Yemen

**< Provision of Construction of Emergency Latrines Services (Including 2 designs) to NRC Yemen  
– one year Long Term Agreement (renewable)>**

تقديم خدمة بناء حمامات الطوارئ (يتضمن تصميمين) – المجلس النرويجي مكتب اليمن – اتفاقية طويلة الاجل لمدة عام قابلة  
للتعديل .

**<NRC/YE/21/019>**

&lt;30 of May 2021&gt;

**SUBJECT: INVITATION TO TENDER FOR < provision of Construction of Emergency Latrines Services (Including  
2 designs) to NRC Yemen – one year Long Term Agreement >**

Dear Mr/Ms

Following your enquiry regarding the publication of the above-mentioned invitation to tender, please find enclosed the following documents, which constitute the tender dossier.

Any request for clarification must be received by NRC in writing via email at least 5 working days before the deadline for submission of tenders. NRC will reply to bidders' questions at least 2 working days before the deadline for submission of tenders.

Costs incurred by the bidder in preparing and submitting the tender proposals will not be reimbursed.

We look forward to receiving your tender and the accompanying tender guarantee of [5000 USD Valid for three months from the tender submission deadline date] at the address specified in the Instructions to Bidders before < 21<sup>st</sup> of Jun 2021 at 3:00 pm Sana'a time zone +3 GMT >, as stated in the procurement notice

If you decide not to submit a tender, we would be grateful if you could inform us in writing, stating the reasons for your decision.

Yours sincerely,

&lt; NRC Yemen County office Logistics &gt;

**This ITB document contains the following:**

- ✓ This cover Letter
- ✓ Section 2: Bid Data sheet
- ✓ Section 3: NRC Invitation to bid general terms & condition
- ✓ Section 4: Technical description of the Bid
- ✓ Section 5: Bidding form
- ✓ Section 6: Work Schedule
- ✓ Section 7: Company Profile and Previous Experience
- ✓ Section 8: Bill of Quantities
- ✓ Section 9: Suppliers Ethical Standards Declaration

**Sections highlighted in green must be completed by the bidder.**

يجب أن يقوم المتقدم بالعطاء باكمال الأقسام المظللة باللون الأخضر.

**ANNEXES:**

- ✓ ANNEX 1-A: BoQs & pricing proposal (First design).
- ✓ ANNEX 1-B: Technical drawing for construction of latrines and hand washing.
- ✓ ANNEX 2-A: BoQs & pricing proposal (Second design).
- ✓ ANNEX2-B: TOR for Communal latrine construction with hand washing.
- ✓ ANNEX 2-C: Technical drawing.

- Bidders pricing them bids by complete the Annex 1,2 –A (BoQ's) & samples photos should be attached for all the materials & items that will use in work including: (Brand Name, Specifications, Type, Country of origin, etc.)  
يقوم مقدمو العطاءات بتسعير عطاءاتهم من خلال استكمال الملحق 1،2 - أ (جداول الكميات) ويجب إرفاق صور العينات لجميع العناصر التي ستستخدم في العمل بما في ذلك: (العلامة التجارية ، المواصفات ، النوع ، بلد المنشأ ، إلخ.)

## SECTION 2 Bid Data Sheet Work Contract

الجزء الثاني - استمارة بيانات عقد العمل

### 1. BACKGROUND DATA

<b>Contract Name: &lt;... Provision of Construction of Emergency Latrines Services (Including 2 designs) to NRC Yemen – one year Long Term Agreement (renewable)&gt;</b> تقديم خدمة بناء حمامات الطوارئ ( يتضمن تصميمين ) – المجلس النرويجي مكتب اليمن – اتفاقية طويلة الاجل لمدة عام قابلة للتتمديد	<b>Contract Number: NRC/YE/21/19</b>
---------------------------------------------------------------------------------------------------------------------------------------------------------------------------------------------------------------------------------------------------------------------------------------------------------	--------------------------------------

This bid is issued by Norwegian Refugee Council (NRC office in Yemen, Any correspondence can be addressed the following address office. <. Hadda Road - Behind AL Fakher Restaurant - Sana'a Yemen.> or send an email to:

[ye.procurement@nrc.no](mailto:ye.procurement@nrc.no)

### 2. SCOPE OF WORK

Contract No.	Country	Location	Work Description
NRC/YE/21/19	Yemen	NRC YEMEN Field (All YEMEN Governorate)	provision of Construction of Emergency Latrines Services

Please refer to the technical specifications, drawings, and BOQs for more details.

**MAXIMUM TIME-FRAME FOR COMPLETION OF WORKS:** The overall schedule for works for each contract must be completed as per the attached format. However, you are expected to prepare a schedule to complete the works for 500 Latrines within <.....>

### 3. SCHEDULE & DEADLINE FOR SUBMISSION

The deadline for submission of bids is <3:00 Pm Sana'a Time Zone +3 GMT.> on the <21<sup>st</sup> of Jun 2021.>. Late bids will not be accepted.

	DATE	TIME*
Invitation to Bid release دعوة لتقديم العطاء	30 of May 2021	9:00 am
Deadline for request for any clarifications from NRC آخر موعد لطلب أي إيضاحات من المجلس النرويجي للاجئين	15 of Jun 2021	12:00 pm
Last date on which clarifications are issued by NRC آخر تاريخ تم إصدار التوضيحات فيه من المجلس النرويجي للاجئين	18 <sup>th</sup> of Jun 2021	12:00 pm
Deadline for submission of tenders (receiving date, not sending date) الموعد النهائي لتقديم العطاءات ( تاريخ الاستلام ، وليس تاريخ الإرسال )	21 <sup>st</sup> of Jun 2021	3:00 pm
Tender opening session by NRC موعد فتح العطاءات وسيتم الفتح داخليا بواسطة لجنة المناقصه التابع للمجلس النرويجي للاجئين	23 <sup>th</sup> of Jun 2021	9:00 am

Notification of award to the successful tenderer إخطار الفائز بالعطاء	3 <sup>th</sup> of Jul 2021	10:00am
Signature of the contract توقيع العقد	TBD	TBD

\* All times are in the local time of Yemen Sana'a +3GMT

Please note all dates are provisional dates and NRC reserves the right to modify this schedule.

#### 4. MANNER OF SUBMISSION:

Please submit your bids in accordance with the requirements detailed below:

Complete sealed bid documents shall be hand delivered at NRC Country office at Hadda Road - Behind AL Fakher Restaurant - Sana'a Yemen, not later than <3:00 pm>, on the due date indicated above. Tenders will be opened thereafter in the presence of the Local Authorities or their representatives who choose to attend.

#### 5. ASSESSMENT CRITERIA

Award of the contract(s) will be based on the following:

##### Step 1: Administrative compliance check

Bidders must provide evidence of the following for their bid to be considered compliant:

1. Sections 5-9 completed, signed and stamped
2. Bidder has included a copy of their valid business licence.

##### Step 2: Technical Evaluation

A Technical Evaluation of all bids received will be conducted to shortlisted bidders. Criteria that will be used to evaluate and score the bids are outlined in Section 3, Clause 25

##### Step 3: Financial Evaluation

Price in comparison to NRC established expectation and in comparison to other bidders of comparable technical quality

**6. BIDDER'S CHECKLIST**

Description	To be filled by bidder		To be filled by NRC bid committee		
	Included?		Present & complete?		Comments
Step/ document to be submitted <u>with</u> tender	Yes	No	Yes	No	
Complete tender package delivered before the deadline specified in Section 2 - Bid Data Sheet - <b><u>Compulsory</u></b>					
Section 4 –Works Provision – completed, signed & stamped – <b><u>Compulsory</u></b>					
Section 5 – Bidding Form – completed, signed & stamped – <b><u>Compulsory</u></b>					
Section 6 – Works Provision Schedule - signed & stamped – <b><u>Compulsory</u></b>					
Section 7 – Company profile & experience – completed, signed & stamped – <b><u>Compulsory</u></b>					
Section 8 – Works provision description and pricing proposal (BoQs) & Questionnaire – completed, signed & stamped – <b><u>Compulsory</u></b>					
Section 9 – Supplier ethical standards declaration – signed & stamped – <b><u>Compulsory</u></b>					
<b>Annex (1,2)-A :BoQ &amp; Pricing proposal.</b> – signed & stamped – <b><u>Compulsory</u></b>					
<b>Annex (1,2)-B : Designs &amp; Drawing.</b> – signed & stamped – <b><u>Compulsory</u></b>					
<b>Supporting documents</b>					
Copy of company registration – <b><u>Compulsory</u></b>					
Copy of tax registration – <b><u>Compulsory</u></b>					
Copies of past contracts/ POs as proof of experience					
Copies of Company Director(s) ID – <b><u>Compulsory</u></b>					

To be filled in by NRC bid committee only	Eligible	Ineligible
Outcome of administrative eligibility check.		

## SECTION 3 NRC Invitation to bid - General Terms & Conditions

### الجزء الثالث دعوة لتقديم عطاءات الشروط والأحكام العامة - لدى المجلس النرويجي للاجئين

#### 1 SCOPE OF BID

- 1.1 The bid is based on the scope of the assignment as determined in the Bid Data Sheet (Section 2). The instruction to bidders should be read in conjunction with the Bid Data Sheet.
- 1.2 The successful Bidder will be expected to complete the assignment by the Intended Completion Date specified in the contract to be signed

#### 2 CORRUPT PRACTICES

- 2.1 **Norwegian Refugee Council** requires Employees, Bidders and Contractors, to observe standards of ethics during procurement and the execution of contracts. In pursuit of this, Norwegian refugee Council defines, for the purposes of this provision, the terms set forth below as follows:
  - a) "Corrupt practice" includes the offering, giving, receiving, or soliciting of anything of value to influence the action of a public official in the procurement process or in contract execution; and
  - b) "Fraudulent practice" includes a misrepresentation of facts in order to influence a procurement process or the execution of a contract to the detriment of the Norwegian Refugee Council, and includes collusive practices among Bidders prior to or after bid submission designed to establish bid prices at artificial, non-competitive levels and to deprive the Norwegian Refugee Council of the benefits of free and open competition;
  - c) In any case where fraud or corruption is identified, NRC will:
    - reject any bids where the Bidder has engaged in corrupt or fraudulent practices in competing for the Contract;
    - remove bidding contractors who engage in fraudulent or corrupt practices, from our Prequalified list
    - liaise with District Officials to report if fraudulent or corrupt practices are identified ☐ terminate works
- 2.2 Any communications between a Bidder and the Norwegian Refugee Council related to matters of alleged fraud or corruption must be made in writing and addressed to the Country Director in Yemen

#### 3 ELIGIBLE BIDDERS

- 3.1 A Bidder shall meet the following criteria to be eligible to participate in NRC procurement of Works: a) the bidder, at the time of bid, is not:
  - i. insolvent;
  - ii. in receivership;
  - iii. Bankrupt; or IV. being wound up
- b) the bidder's business activities have not been suspended;
- c) the bidder is not the subject of legal proceedings for any of the circumstances in (b); and
- d) The bidder has fulfilled his or her obligations to pay taxes and social security contributions. In a case where VAT is included in a bid, a copy of the VAT certificate must accompany the bid. A Bidder, and all parties constituting the Bidder including sub-contractors, shall not have a conflict of interest. All Bidders found to have a conflict of interest shall be disqualified. A Bidder may be considered to have a conflict of interest with one or more parties in this bidding process, if they have a relationship with each other, directly or

through common third parties, that puts them in a position to have access to information about or influence on the bid of another Bidder, or influence the decisions of the Norwegian Refugee Council regarding this bidding process

3.2 A Bidder whose circumstances in relation to eligibility change during a procurement process or during the execution of a contract shall immediately inform the Norwegian Refugee Council.

3.3 NRC reserves the right to refuse a bid at any time if the bidder or one of its sub-contractors provided material support or resources to any individual or entity that commits, attempts to commit, advocates, facilitates, or participates or is found guilty of fraud, active corruption, collusion, coercive practice, bribery, involvement in a criminal organization or illegal activity, or immoral human resources practices, including but not limited to: child labour, non-discrimination, freedom of association, payment of the legal national minimum wage, and forced labour.

#### **4 JOINT VENTURES, CONSORTIA AND ASSOCIATIONS**

Bids submitted by a joint venture, consortium or association of two or more firms as partners will only be accepted in exceptional circumstances.

#### **5 ONE BID PER BIDDER PER WORK**

Each Bidder shall submit only one Bid per contract. A Bidder who submits or participates in more than one bid per contract will cause all the bids with the Bidder's participation to be rejected.

#### **6 COST OF BIDDING**

The Bidder shall bear all costs associated with the preparation and submission of his Bid, and the Norwegian Refugee Council shall not be responsible or liable for those costs, regardless of the conduct or outcome of the bidding process.

#### **7 SITE VISIT**

The Bidder, at the Bidder's own responsibility and risk, is encouraged to visit and examine the Site of Works and its surroundings and obtain all information that may be necessary for preparing the bid and entering into a contract for construction of the Works. The costs of visiting the Site shall be at the Bidder's own expense.

#### **8 INSPECTION**

NRC is obliged to ensure that its procurement decisions are clearly justified and documented and keeping within the Donors mandatory principles. In that regard, full and on-the-spot access must be granted to representatives of NRC, the Donor or any organisation or person mandated by it, to premises belonging to NRC or its contractors. The right to access shall include all documents and information necessary to assess, or audit the implementation of the contract

#### **9 OBTAINING AND COMPLETING BIDDING DOCUMENTS**

9.1 Bidders who did not obtain the Bidding Document directly from the Norwegian Refugee Council will be rejected during evaluation. Where a Bidding Document is obtained from the Norwegian Refugee Council on a Bidder's behalf, the Bidder's name must be registered with the Norwegian Refugee Council at the time of issue.

9.2 The Bidder is expected to examine all instructions, forms, terms, and specifications in the Bidding Document. Failure to furnish all information or documentation required by the Bidding Document may result in the rejection of the bid.

**10 CLARIFICATION OF BIDDING DOCUMENT**

A prospective Bidder requiring any clarification of the Bidding Document shall contact the Norwegian Refugee Council in writing. The Norwegian Refugee Council will respond in writing to any request for clarification before the deadline for clarification of bids. The Norwegian Refugee Council shall forward copies of its response to all Bidders who have acquired the Bidding Document, including a description of the inquiry but without identifying its source.

**11 AMENDMENT OF BIDDING DOCUMENT**

11.1 At any time prior and until 48 hours prior to the deadline for submission of bids, the Norwegian Refugee Council may amend or cancel the Bidding Document by informing the bidders in writing.

11.2 To give prospective Bidders reasonable time in which to take an amendment or cancellation into account in preparing their bids, the Norwegian Refugee Council can, at his discretion, extend the deadline for the submission of bids.

**12 LANGUAGE OF BID**

12.1 The bid, as well as all correspondence and documents relating to the bid shall be written in English.

12.2 Supporting documents and printed literature that are part of the bid may be in another language provided they are accompanied by an accurate translation of the relevant passages in English, in which case, for purposes of interpretation of the Bid, such translation shall govern.

**13 DOCUMENTS COMPRISING THE BID**

13.1 The bid submitted by the Bidder shall comprise the following:

- Signed and stamped Contractor's Bidding form in Section 5 - Any other information and documents requested in Section 4.
- Service provision Schedule (as in Section 6)
- Company Profile and Previous experience (as in Section 7)
- Service Description and Pricing Proposal (as in Section 8)
- Signed and stamped Supplier Ethical Standards Declaration (as in Section 9)

13.2 All forms must be completed without any alterations to the format, and no substitutes shall be accepted. All blank spaces shall be filled in with the information requested.

**14 BID PRICE FOR WORKS CONTRACT**

13.1 Bid prices are for complete contracts. Contracts cannot be subdivided into pieces. Where a bid is submitted, all relevant BoQ must be completed.

13.2 The Bidder shall fill in rates and prices for all items of the Works/supply or service described in the drawings and specifications and listed in the BoQ. Items for which no rate or price is entered by the Bidder will not be paid for by the Norwegian Refugee Council when executed and shall be deemed covered by the other rates and prices in the BoQ.

13.3 Unless otherwise specified in the Bid Data Sheet, all duties, taxes and other levies payable by the contractor under the contract, shall be included in the total bid price submitted by the bidder.

13.4 For bidder subject to VAT, VAT should be mentioned in the offers

13.5 The priced Bill of Quantities submitted by any Bidder shall be checked for arithmetical errors and for what might be considered unreasonable rates during the evaluation. Where errors are identified one or more of the following steps may be taken:

- a) If any rates are considered to be unrealistic or unreasonable they may be altered by mutual agreement, provided that no alteration shall be made in the amount of the Bid.



- b) If any arithmetical errors are detected in an otherwise acceptable bid, and the Bidder, on being so notified, is prepared to confirm his bid and if the Bidder is subsequently awarded the contract, then the Bid shall be altered to reflect the difference.
- c) The Bidder is reminded that it is entirely his responsibility to ensure the accuracy of his bid. No alteration will be made to the bid after its submission on the grounds of any arithmetical errors subsequently discovered except as provided above.

#### **15 CURRENCIES OF BID AND PAYMENT**

All prices shall be quoted by the Bidder in **<.USD.>**, unless otherwise stated. Similarly, all payments will be made in **<.USD.>**.

#### **16 BID VALIDITY**

16.1 Bids shall remain valid for a period of (One year) 365 calendar days after the date of the bid submission deadline as prescribed by Norwegian Refugee Council. A bid valid for a shorter period shall be rejected as non-compliant.

16.2 In exceptional circumstances, prior to the expiration of the bid validity period, the Norwegian Refugee Council may request Bidders in writing to extend the period of validity of their bids. A Bidder must confirm in writing his acceptance of the extension. In case of extension, modification of the bid is not permitted.

#### **17 ALTERNATIVE BIDS**

Bidders shall submit offers that comply with the requirements of the bidding documents, including the basic technical design as indicated in the drawings and specifications. Alternative bids shall not be considered unless otherwise indicated in Section 2 – the Bid Data Sheet.

#### **18 FORMAT AND SIGNING OF BID**

The Bidder shall prepare one set of bid documents per contract that he wishes to bid for. The bidder should hold a copy of the documents with himself, for reference purposes.

#### **19 SEALING AND MARKING OF THE BID**

19.1 The Bidder shall enclose the bid for each contract in a plain envelope securely sealed

19.2 The envelopes shall:

- (a) be addressed to the Logistics Office, Norwegian Refugee Council, in the location specified in Section 2 – the Bid Data Sheet
- (b) bear the Contract number
- (c) no other markings should be on the envelope

19.3 If all envelopes are not sealed and marked as required, the Norwegian Refugee Council will reject the bid

#### **20 DEADLINE FOR SUBMISSION OF BIDS**

Bids must be received by the Norwegian Refugee Council at the address given and no later than the date and time indicated in Section 2 - the Bid Data Sheet.

#### **21 LATE BIDS**

The Norwegian Refugee Council shall not consider any bid that arrives after the deadline for submission as stipulated in Section 2 – the Bid Data Sheet. Any bid received by the Norwegian Refugee Council after the deadline for submission of bids shall be declared late and rejected.

## **22 WITHDRAWAL AND REPLACEMENT OF BIDS**

- 22.1 A Bidder may withdraw or replace its bid after it has been submitted at any time before the deadline for submission of bids by sending a written notice, signed by an authorized representative. Any corresponding replacement of the bid must accompany the respective written notice. All notices must be:
- (a) submitted as with Clauses 20 and 21, and in addition, the envelopes shall be clearly marked “WITHDRAWAL” or “REPLACEMENT” and
  - (b) received by the Norwegian Refugee Council prior to the deadline for submission of bids, in accordance with Section 2 – the Bid Data Sheet
- 22.2 After the opening of bids, modifications to bids must be documented and any discussions reported in writing. A bid may be withdrawn at any stage, with written notice.

## **23 CONFIDENTIALITY**

- 23.1 Information relating to the examination, evaluation, comparison, and post-qualification of bids, and recommendation of contract award, shall not be disclosed to bidders or any other persons not officially concerned with such process until information detailing the best evaluated Bidder is communicated to all Bidders.
- 23.2 Any effort by a Bidder to influence the Norwegian Refugee Council in the examination, evaluation, comparison, and post-qualification of the bids or contract award decisions may result in the rejection of its bid.
- 23.3 From the time of bid opening to the time of Contract award, if any Bidder wishes to contact the Norwegian Refugee Council on any matter related to the bidding process, it should do so in writing.

## **24 CLARIFICATION OF BIDS**

Norwegian Refugee Council may, at its discretion, ask any Bidder for a clarification of its Bid. The Norwegian Refugee Council’s request for clarification and the response shall be in writing. Any clarification submitted by a Bidder that is not in response to a request by the Norwegian Refugee Council shall not be considered. All requests for clarifications shall be copied to all bidders for information purposes. No change in the price or substance of the bid shall be permitted, except to confirm the correction of errors.

## **25 BIDS VALIDATION**

- 25.1 The Norwegian Refugee Council’s determination of a Bid’s validity is to be based on the contents of the bid itself, which cannot be corrected if determined to be invalid
- 25.2 A valid bid is one that complies with all the terms, conditions, and specifications of the Bidding Document, without deviation or omission, which affects, or could affect;
- a) the scope, quality, or performance of the Works specified in the Contract; or
  - b) limits in any substantial way, the Norwegian Refugee Council’s rights or the Bidder’s obligations under the Contract

## **26 EVALUATION OF BID** **تقييم العطاءات**

- 26.1 The Norwegian Refugee Council shall examine the legal documentation and other information submitted by Bidders to verify eligibility, and then will review and score bids according to the following criteria;
- a) Completion and inclusion of requested information and supporting documents (Administrative compliance)
  - b) Price in comparison to NRC estimated rate (Financial evaluation)
  - c) Overall timeframe for the works (Technical evaluation)
  - d) Schedules (Key Personnel and Activity schedule) (Technical evaluation)

e) Bill of Quantities (Financial & Technical evaluation)

f) Previous experiences in similar works (Technical evaluation)

In addition, the analyzing will be conducted as followed:

Scored Criteria				Weighting
Technical Criteria	Price (including any transport)			40%
	Previous experience	supplier Previous experience in general supplies or work with NGOs and UN agencies in 3 last years	10%	50%
		Total contracts amount for all previous contracts in general construction works in last 3 years	10%	
		Number & total contracts amount for all previous contracts ONLY for the Construction of emergency latrines in last 3 years	15%	
		Number of previous long term agreement in Construction of emergency latrines in last 3 years	15%	
	Lead Time (Delivery Time)			10%
<u>Total Scoring</u>				100%

- 26.2 In case of two contractors being scored the same in the evaluation, the one with the highest technical ranking will be awarded the contract
- 26.3 Anti-money laundering, anti-bribery, anti-corruption and anti-terrorism legislation applicable in some jurisdictions may require NRC to verify the identity of the bidder prior to financial transactions. NRC reserves the right to use online screening tools to check the bidder's record with regards to their possible involvement in illegal or unethical practices.
- 26.4 Norwegian Refugee Council reserves the right to reject all bids, and re-tender if no satisfactory bids are submitted

## 27 AWARD PROCEDURE

- 27.1 The Norwegian Refugee Council shall award the Contract in writing, with an award letter, to the Bidder whose offer has been determined to be the best, before the end of the bid validity period
- 27.2 Any bidder who has not been awarded a contract, will be notified in writing
- 27.3 Until a formal contract is prepared and executed, the Award Letter shall constitute a binding agreement between the bidder and NRC.
- 27.4 The Award Letter will state the sum that the Norwegian Refugee Council will pay the Contractor in consideration of the Works as prescribed in the Contract, and in accordance with the Bid.
- 27.5 The Bidder is thereafter required to submit a Letter of Acceptance, confirming their wish to proceed with a contract.

**28 SIGNING OF CONTRACT**

28.1 Upon receipt of the Letter of Acceptance, the Norwegian Refugee Council shall call the successful Bidder to sign the Contract.

28.2 Within an agreed timeframe, the successful Bidder shall sign, date, and return the Contract to the Norwegian Refugee Council.

**29 CONTRACT**

29.1 The Contractor-to-be will comply with a Works Contract, which will foresee, among others, the following commitments:

- a) Non-exploitation of child labour and respect of basic social rights and working conditions (including security regulations and insurance for labour);
- b) Provide transport, with insurance coverage for the materials, up to the warehouse and construction sites;
- c) Accomplish the works, according to the required quantities and technical specifications indicated in the Bill of Quantities and Technical Drawings (SECTIONS 7 and 8), within the proposed timeframe

**30 SUB CONTRACTING**

Please be advised that subcontracting is not permitted. Bidders must have the capacity to complete the works themselves.

## SECTION 4

### WORKS CONTRACT - Technical description of the bid

الجزء الرابع - الوصف الفني للعمل

**(Construction) Supplying & Installing of Emergency Latrine Please refer to:**

**1- Annex (1,2)-A : BoQ and pricing proposal.**

الرجوع الى الملحق رقم (1 & 2)- أ : جداول الكميات وعرض السعر

**2- Annex (1,2)-B : Designs & Drawing.**

الرجوع الى الملحق رقم (1 & 2) - ب : الرسومات والتصاميم

## SECTION 5: BIDDING FORM

### القسم الخامس نموذج العطاءات

Please provide information against each requirement.

Additional rows can be inserted for all questions as necessary. If there is insufficient space to complete your answer in the space provided, please include on a separate attachment with a reference to the question.

#### 1. Bidder's general business details

##### a) General information

Company name:	
Any other trading names of company:	
Registered name of company (if different):	
Nature of primary business/trade:	
Primary contact name:	
Job title:	
Phone:	
Email:	
Registered Address:	
Business license number:	
Country of registration	
Registration date:	
Expiry date:	
Legal status of company (eg. partnership, private limited company, etc.)	

##### b) Owners/Managers

Please fill in the below table with the full names and the year of birth of the company's owner(s) and manager(s)\*:

Full name	Year of birth

*\* Please note this information is necessary in order to conduct the vetting procedure referred to in clause 25 of the Invitation to Bid-General Terms and Conditions.*

##### c) Employees

Please list the employees who would be involved with NRC in the event of contract award:

Employee name	Job title	Role on NRC project	Phone	Email
1.				
2.				
3.				
...				

**d) Company bank account details:**

Beneficiary name: .....  
 Beneficiary account no.: .....  
 Beneficiary Bank: .....  
 Bank branch: .....  
 SWIFT: .....  
 IBAN: .....  
 Bank address: .....

**2. References**

Please provide details of at least 3 client references whom NRC may contact, preferably from NGOs and UN agencies, for similar related works:

Client/company name	Contact person	Phone	Email	Contract details (works, location, size, value, etc)
1.				
2.				
3.				
...				

**3. Equipment**

Please provide details of any relevant machinery/equipment/vehicles owned by the company that would potentially be used for construction: (do not mention rented items):

Type of machinery/ equipment/ vehicles	Quantity
1.	
2.	
3.	
4.	
5.	
6.	

**4. Defects Liability/Guarantee Period**

NRC are seeking suppliers who can guarantee the works for 6 months and are able to provide a 5% performance bank guarantee on each purchase order.

- a) In the event of contract award, please confirm you are able to guarantee the works for a period of six months.
- ☐ Yes  
☐ No

Add comments if you need

### 5. **Frame work agreement**

NRC are seeking suppliers who are interested in entering into a fixed price Framework Agreement (Framework Contract) that would allow fixed prices and fluctuating order frequency during the course of the contract.

- b) In the event of contract award, please confirm you are willing to enter into a fixed price agreement with NRC.

- ☐ Yes  
☐ No

Add comments if you need.

### 6. **Confirmation of Bidder's compliance**

We, the Bidder, hereby certify that our tender is a genuine offer and intended to be competitive and we confirm we are eligible to participate in public procurement and meet the eligibility criteria specified in the Invitation to Bid. We confirm that the prices quoted are fixed and firm for the duration of the validity period and will not be subject to revision or variation.

The following documents are included in our **Bid**: (please indicate which documents are included by ticking the boxes below).

Documents	included
Section 5: Bidding form; completed, signed and stamped	<input type="checkbox"/>
Section 6: Work Schedule; completed, signed and stamped	<input type="checkbox"/>
Section 7: Company Profile and Previous Experience; completed, signed and stamped	<input type="checkbox"/>
Section 8: Pricing Proposal; completed, signed and stamped	<input type="checkbox"/>
Section 9: Supplier's ethical standards declaration; completed, signed and stamped	<input type="checkbox"/>
Copy of valid business licence	<input type="checkbox"/>

We understand that NRC is not bound to accept the lowest, or indeed any bid, received.

We agree that NRC may verify the information provided in this form itself or through a third party as it may deem necessary.

**We confirm that NRC may in its consideration of our offer, and subsequently, rely on the statements made herein.**

<b>Name of Signatory:</b>	<b>Tel N°:</b>
<b>Title of Signatory:</b>	<b>Name of Company:</b>
<b>Signature &amp; stamp:</b>	<b>Date of Signing:</b>
	<b>Address:</b>



## SECTION 6: Work Schedule

القسم السادس الجدول الزمني للعمل

Attach the work schedule here:

Schedule to include:

- 1- Duration of each sub-activity
- 2- Total duration of the works

(Provide your Work Schedule for three latrine groups).

### A- 100 Latrines

#	Activity	Week 1	Week 2	Week 3	Week 4	Week 5	Week 6	Week 7	Week 8	Week 9	Week 10	Week ...
1												
2												
3												
4												
5												

### B- 200 Latrines

#	Activity	Week 1	Week 2	Week 3	Week 4	Week 5	Week 6	Week 7	Week 8	Week 9	Week 10	Week ...
1												
2												
3												
4												
5												

### C- 300 Latrines

#	Activity	Week 1	Week 2	Week 3	Week 4	Week 5	Week 6	Week 7	Week 8	Week 9	Week 10	Week ...
1												
2												
3												
4												
5												

**D- 500 Latrines**

#	Activity	Week 1	Week 2	Week 3	Week 4	Week 5	Week 6	Week 7	Week 8	Week 9	Week 10	Week ...
1												
2												
3												
4												
5												

**E- 1000 Latrines**

#	Activity	Week 1	Week 2	Week 3	Week 4	Week 5	Week 6	Week 7	Week 8	Week 9	Week 10	Week ...
1												
2												
3												
4												
5												

3. Detailed list of proposed **Personnel/Manpower** involved in the activities (e.g. engineers, site supervisors, foremen, masons, carpenters, plumbers, unskilled labors, etc.) with an estimate of the total man-day completed by each of the skills.

The Submission of the Manpower shall follow the below simple format:

#	Proposed Personnel/Manpower	# of workers allocated to this project
1		
2		
3		
4		

**NOTE:** The list shouldn't be limited to this Form in regards to the number of proposed Key Personnel. A comprehensive list has to be submitted adapting the Form to the necessary rows.

## SECTION 7

## COMPANY PROFILE AND PREVIOUS EXPERIENCE

القسم السابع

نبذة عن الشركة والخبرات السابقة

The Bidder is requested to:

1. Submit the **Company Profile**
2. Complete the following **Previous Experience Table** listing the work or contracts undertaken in the past 5 years similar to the works required under this contract
3. Submit **evidences of previous experience** in form of Contracts, Completion Certificates, Handover Documents etc.

#	Name of Project / Type of work	Total value of the performed works (.....)	Duration of the works contract	Starting date	Ending date	Contracting Authority and Place
1						
2						
3						
4						
5						
...						

**NOTE:** The list shouldn't be limited to this Form in regards to the number of works reported. A comprehensive list of the last 5 years' experience has to be submitted adapting the Form to the necessary rows.

NRC may conduct reference checks for previous contracts completed

## SECTION 8

### QUESTIONNAIRE & BILL OF QUANTITIES

#### القسم الثامن الاستبيان و جدول الكميات

##### • **Preamble to Bill of Quantities**

- NRC has the faculty to contract all or part of the requested supply and works, according to budget availability;
- The supply and works should be the best available in the market;
- The Bidder should submit **supporting documents** concerning the proposed construction materials and works (i.e. catalogues, models, brands, drawings, technical documentation, technical specifications, etc. of the offered items);
- **The NRC Representative must approve all the materials to supply and the works to execute, prior to delivery and execution.**
- Costs must include all duties, taxes and other levies payable by the contractor under the contract and all mobilization costs specified in section 3.

**(Please fill the Annex (1,2)- A : BoQ & pricing Proposal)**

الرجاء استخدام الملحق رقم (1,2) - أ : جداول الكميات وعرض السعر

**NOTE:** In case of discrepancy between BoQs and Drawings, the BoQs will prevail. In case of discrepancy between drawings, the one at larger scale will prevail.

##### • **Questionnaire:**

- Service provider should describe in detail his service provision and demonstrate how it complies with NRC requirements
- We recommend that you provide a detailed narrative description in addition to company brochures or official documents, in order to clarify your offer.
- Please also fill up the questionnaire below.

#### Questionnaire

QUESTIONS	ANSWERS
• <b>EXPERIENCE</b>	
How many years has your company/office been in business as a general contractor under your present business name?	
How many years' experience in construction work has your company had: (a) As a general contractor (b) As a sub-contractor	

What projects has your company/office completed?	Please attach Stamped table as Annex1. Includes the following: <table border="1"> <thead> <tr> <th>YEAR</th> <th>CONTRACT AMOUNT</th> <th>CLASS OF WORK</th> <th>WHEN COMPLETED</th> <th>NAME AND ADDRESS OF OWNER</th> </tr> </thead> <tbody> <tr> <td> </td> <td> </td> <td> </td> <td> </td> <td> </td> </tr> </tbody> </table>	YEAR	CONTRACT AMOUNT	CLASS OF WORK	WHEN COMPLETED	NAME AND ADDRESS OF OWNER					
YEAR	CONTRACT AMOUNT	CLASS OF WORK	WHEN COMPLETED	NAME AND ADDRESS OF OWNER							
What projects has your company/office now in process of construction?	Please attach Stamped table as Annex2. Includes the following: <table border="1"> <thead> <tr> <th>YEAR</th> <th>CONTRACT AMOUNT</th> <th>CLASS OF WORK</th> <th>WHEN COMPLETED</th> <th>NAME AND ADDRESS OF OWNER</th> </tr> </thead> <tbody> <tr> <td> </td> <td> </td> <td> </td> <td> </td> <td> </td> </tr> </tbody> </table>	YEAR	CONTRACT AMOUNT	CLASS OF WORK	WHEN COMPLETED	NAME AND ADDRESS OF OWNER					
YEAR	CONTRACT AMOUNT	CLASS OF WORK	WHEN COMPLETED	NAME AND ADDRESS OF OWNER							
Have you ever failed to complete any work awarded to you?  If so, where, and why?											
Has any officer or partner of your company/office ever been an officer or partner of some other organization that failed to complete a construction contract?  If so, state name of individual, other organization and reason therefor.											
Has any officer or partner of your company/office ever failed to complete a construction contract handled in his own name? If so, state name of individual, name of owner and therefor.											
In what other lines of business are you financially interested?											
For what cities have you performed work and to whom do you refer?											

How many related project has your company implemented?	Please attach Stamped table as Annex3. Includes the following: <table border="1" data-bbox="805 268 1442 590"> <thead> <tr> <th data-bbox="805 268 894 443">YEAR</th> <th data-bbox="894 268 1044 443">CONTRACT AMOUNT</th> <th data-bbox="1044 268 1146 443">CLASS OF WORK</th> <th data-bbox="1146 268 1312 443">WHEN COMPLETED</th> <th data-bbox="1312 268 1442 443">NAME AND ADDRESS OF OWNER</th> </tr> </thead> <tbody> <tr> <td data-bbox="805 443 894 590"></td> <td data-bbox="894 443 1044 590"></td> <td data-bbox="1044 443 1146 590"></td> <td data-bbox="1146 443 1312 590"></td> <td data-bbox="1312 443 1442 590"></td> </tr> </tbody> </table>	YEAR	CONTRACT AMOUNT	CLASS OF WORK	WHEN COMPLETED	NAME AND ADDRESS OF OWNER					
YEAR	CONTRACT AMOUNT	CLASS OF WORK	WHEN COMPLETED	NAME AND ADDRESS OF OWNER							
How many project can be managed and implemented by your company at the same time?											
Do you have ability & capacity to implement project in different governorates at the same time?											
Do you have accessibility & capability to wherever in the all seven mentioned governorates in the BoQs( Annex (A,B)-1)-( Al-Dhalee, Taiz, Lahj, Aden, Amran, Hodiedah, & Hajjah) ?  If not, please mention the governorates that you have accessibility in?											
What is the maximum & minimum latrines can you implement in each governorate per each request?  Please attach list as annex4 indicating the max & min number?											
What is your maximum & minimum time needed to start the implementation after any requested, once you receive an order?  Please attach list as annex5 indicating the max & min time?											
<b>• PLAN AND EQUIPMENT</b>											
In what manner have you inspected this proposed work? Explain in detail.											
Explain your plan for performing the proposed work.  Please attach Stamped Paper as Annex6. To explain your plan in detail											
The work, if awarded to you, will have the personal supervisions of whom?   Please attach Stamped list as Annex7. Includes the project name, location, supervisor, and qualification.											

<p>Do you intend to do the implementation of the proposed work with your own skilled and unskilled labors?</p> <p>If so, please attach Stamped list as Annex8. Includes the project name, location, supervisor, skilled and skilled labors qualification or years of experience.</p> <p>Can you explain in narrative how you recruit your labors?</p>	
<p>Do you intend to do the implementation of the proposed work with your own equipment's?</p> <p>If so, please attach Stamped list as Annex9. For your own equipment's; and give type of equipment to be used.</p>	
<p>Do you intend to perform the proposed projects through an agent,</p> <p>If so, please state the name and address of sub-contractor or agent, and type of his equipment and financial responsibility.</p>	
<p>Have you made contracts or received firm offers for all materials within prices used in preparing your proposal? Do not give names of dealers or manufacturers?</p>	
<p>List all permits, licenses, or registrations, which you have and are required by law to maintain in order to bid on this work and in order to implement the work. Please include the type of the permit, license, or registration; the name of the issuing entity; the number of the licenses, permit, or registration; and the expiration date.</p>	
<p>• <b>OTHERS</b></p>	
<p>Can you provide stamped report form with all related documents and annexes for the implementation of this project?</p>	
<p>Can you provide financial statement reports for the past three year (If any),</p> <p>If not, please provide stamped letter for your financial capacity?</p>	
<p>What is your financial capacity to cover all mentioned governorate at the same time per each request?</p> <p>Please attach list as annex10 indicating the max financial capacity to cover the project per each governorate per each request.</p>	

Do you have offices in other governorates / cities in Yemen?  If YES, please list them here.	
Do you have a safety plan that demonstrates a commitment to safety?  If YES, please attach it as annex11.	
Please explain in narrative, the safety procedures that will be taken during the implementation of the project.	
Do you have a quality control plan for the proposed projects that demonstrates a commitment to quality?  If YES, please attach it as annex12.	

<b>Prepared by:</b>	
<b>Name:</b>	
<b>Position:</b>	
<b>Signature:</b>	
<b>Date:</b>	
<b>Stamp:</b>	



## SECTION 9

### SUPPLIER'S ETHICAL STANDARDS DECLARATION

NRC as a humanitarian organisation expects its suppliers and contractors to have high ethical standards. Any organization supplying goods to NRC valued at over 10,000 USD (or equivalent) in one year must sign this declaration. This declaration will be kept on file for a period of 10 years and should be updated every year or more often as appropriate.

NRC staff may perform spot checks to verify that these standards are adhered to. Should NRC deem that the supplier fails to meet, or is not taking appropriate steps to meet, these standards, any and all contracts and agreements with NRC may be terminated.

Anyone doing business with Norwegian Refugee Council shall as a minimum;

1. Comply with all laws and regulations in effect in the country or countries of business;
2. Meet the ethical standards as listed below; or
3. Positively agree to the standards and be willing to implement changes in their organisation.

#### **1. Anti-corruption and supplier's compliance with laws and regulations:**

- 1.1. The supplier confirms that it is not involved in any form of corruption.
- 1.2. Where any potential conflict of interest exists between the supplier or any of the suppliers staff members with any NRC staff member, the supplier shall notify NRC in writing of the potential conflict. NRC shall then determine whether action is required. A conflict of interest can be due to a relationship with a staff member such as close family etc.
- 1.3. The supplier will immediately notify senior NRC management if exposed for alleged corruption by representatives of NRC.
- 1.4. The supplier shall be registered with the relevant government authority with regard to taxation.
- 1.5. The supplier shall pay taxes according to all applicable national laws and regulations.
- 1.6. The supplier warrants that it is not involved in the production or sale of any weapons including anti-personnel mines.

#### **2. Conditions related to the employees:**

- 2.1. No workers in our company will be forced, bonded or involuntary prison workers.
- 2.2. Workers shall not be required to lodge "deposits" or identity papers with their employer and shall be free to leave their employer after reasonable notice.
- 2.3. Workers, without distinction, shall have the right to join or form trade unions of their own choosing and to bargain collectively.
- 2.4. Persons under the age of 18 shall not be engaged in work which is hazardous to their health or safety, including night work.
- 2.5. Employers of persons under the age of 18 must ensure that the working hours and nature of the work does not interfere with the child's opportunity to complete his/ her education.
- 2.6. There shall be no discrimination at the work place based on ethnic background, religion, age, disability, gender, marital status, sexual orientation, union membership or political affiliation.
- 2.7. Measures shall be established to protect workers from sexually intrusive, threatening, insulting or exploitative behaviour, and from discrimination or termination of employment on unjustifiable grounds, e.g. marriage, pregnancy, parenthood or HIV status.

- 2.8. Physical abuse or punishment, or threats of physical abuse, sexual or other harassment and verbal abuse, as well as other forms of intimidation, shall be prohibited.
- 2.9. Steps shall be taken to prevent accidents and injury to health arising out of, associated with, or occurring in, the course of work, by minimizing, so far as is reasonably practicable, the causes of hazards inherent in the working environment.
- 2.10. Wages and benefits paid for a standard working week shall meet, at a minimum, national legal standards or industry benchmark standards, whichever is higher. Wages should always be enough to meet basic needs.
- 2.11. Working hours shall comply with national laws and benchmark industry standards, whichever affords greater protection. It is recommended that working hours do not exceed 48 hours per week (8 hours per day).
- 2.12. Workers shall be provided with at least one day off for every 7 day period.
- 2.13. All workers are entitled to a contract of employment that shall be written in a language they understand.
- 2.14. Workers shall receive regular and documented health and safety training, and such training shall be repeated for new workers.
- 2.15. Access to clean toilet facilities and to potable water, and, if appropriate, sanitary facilities for food storage shall be provided.
- 2.16. Accommodation, where provided, shall be clean, safe and adequately ventilated, and shall have access to clean toilet facilities and potable water.
- 2.17. No Deductions from wages shall be made as a disciplinary measure.

### 3. Environmental conditions:

- 3.1. Production and extraction of raw materials for production shall not contribute to the destruction of the resources and income base for marginalized populations, such as in claiming large land areas or other natural resources on which these populations are dependent.
- 3.2. Environmental measures shall be taken into consideration throughout the production and distribution chain ranging from the production of raw material to the consumer sale. Local, regional and global environmental aspects shall be considered. The local environment at the production site shall not be exploited or degraded by pollution.
- 3.3. National and international environmental legislation and regulations shall be respected.
- 3.4. Hazardous chemicals and other substances shall be carefully managed in accordance with documented safety procedures.

We, the undersigned verify that we are in compliance with all applicable laws and regulations and meet the ethical standards as listed above, or positively agree to these ethical standards and are willing to implement necessary changes in the organisation.

DATE: \_\_\_\_\_

NAME OF SUPPLIER/COMPANY: \_\_\_\_\_

NAME OF REPRESENTATIVE: \_\_\_\_\_

SIGNATURE: \_\_\_\_\_

COMPANY STAMP: \_\_\_\_\_

## بيان المعايير الأخلاقية لكافة مقاولي التوريد وتقديم الخدمات والأشغال

يتوقع المجلس النرويجي للاجئين كمنظمة إنسانية أن يكون لدى المقاولين معايير أخلاقية عالية. "يجب على أي مقاول يقوم أو يخطط للقيام بتوريد بضائع أو الاحتفاظ 0 تقديم خدمات أو اشغال إلى المجلس النرويجي للاجئين بقيمة 10,000 دولار أمريكي أو أكثر خلال سنة واحدة أن يوقع على هذا البيان. وسيتم بهذه الوثيقة لمدة 10 سنوات وينبغي تحديثها كل سنة أو أكثر حسب الاقتضاء الاحتفاظ بهذه الوثيقة لمدة.

وقد يقوم موظفو المجلس النرويجي للاجئين بإجراء تدقيق مفاجئ للتحقق من الالتزام بهذه المعايير. وإذا تبين للمجلس النرويجي للاجئين أن المقاول لم يستوف هذه المعايير، أو لم يتخذ الخطوات المناسبة للوفاء بها، فقد يتم إنهاء أي وجميع العقود والاتفاقيات المبرمة مع المجلس النرويجي للاجئين.

يجب على أي مقاول ينفذ أعمال للمجلس النرويجي للاجئين كحد أدنى:

1. الامتثال لجميع القوانين المعمول بها في البلد أو بلدان التي يتم تنفيذ الأعمال فيها؛
2. تلبية المعايير الأخلاقية كما هو موضح أدناه. أو الموافقة بشكل إيجابي على المعايير و الاستعداد التام لتنفيذ التغييرات في منظماتهم.

### 1. مكافحة الفساد و امتثال المقاول للقوانين واللوائح:

- 1.1. أن يؤكد المورد عدم تورطه في أي شكل من أشكال الفساد أو الاحتيال أو التواطؤ أو الإكراه أو الرشوة أو المشاركة في تنظيم إجرامي أو أي نشاط غير قانوني آخر.
- 1.2. في حالة وجود أي تعارض محتمل في المصالح بين المقاول أو أي من موظفي المقاول مع أي موظف من موظفي المجلس، يجب على المقاول إبلاغ المجلس النرويجي بالتضارب المحتمل خطياً. ويحدد المجلس بعد ذلك الإجراء المطلوب . حيث يمكن أن يحدث تضارب في المصالح نتيجة لصلة القرابة مع أحد الموظفين، وما إلى ذلك.
- 1.3. أن يقوم المقاول بإخطار الإدارة العليا للمجلس النرويجي للاجئين على الفور إذا ما تعرض لمزاعم فساد من جانب ممثلي المجلس النرويجي للاجئين.
- 1.4. أن يكون المقاول مسجلاً لدى السلطة الحكومية المختصة فيما يتعلق بالضرائب.
- 1.5. يجب على المقاول دفع الضرائب وفقاً لجميع القوانين واللوائح الوطنية المعمول بها.
- 1.6. أن يضمن المقاول عدم مشاركته في صنع أو بيع أي أسلحة بما في ذلك الألغام المضادة للأفراد.

### 2. الشروط المتعلقة بالموظفين:

- 2.1. لن يتم إجبار أو إرغام أي عامل في شركتنا على العمل.
- 2.2. لا يشترط على العمال تقديم "ضمان" أو أوراق هوية إلى صاحب عملهم، ويحق لهم ترك العمل بعد تقديم اخطار معقول.
- 2.3. وللعمال، دون تمييز، الحق في الانضمام أو تشكيل نقابات من اختيارهم والمساومة بشكل جماعي.
- 2.4. لا يجوز للأشخاص الذين تقل أعمارهم عن 18 سنة أن يزاولوا أعمالاً تشكل خطراً على صحتهم أو سلامتهم، بما في ذلك العمل الليلي.
- 2.5. يجب على أرباب العمل الذين يوظفون اشخاص تقل أعمارهم عن 18 سنة أن يكفلوا عدم تداخل ساعات العمل وطبيعة العمل مع فرصهم لإكمال تعليمهم.

- 2.6 لا يجوز التمييز في مكان العمل على أساس العرق أو الدين أو السن أو الإعاقة أو نوع الجنس أو الحالة الاجتماعية أو الميول الجنسية أو العضوية النقابية أو الانتماء السياسي.
- 2.7 يتعين اتخاذ تدابير لحماية العمال من السلوك التحرش أو التهديد أو الإهانة أو الاستغلال، ومن التمييز أو إنهاء العمل لأسباب غير مبرره ، على سبيل المثال: الزواج، الحمل، الأبوة أو حالة فيروس نقص المناعة البشرية.
- 2.8 يحظر الإيذاء الجسدي أو العقاب أو التهديد بالإيذاء الجسدي أو التحرش الجنسي أو غيره من أشكال التحرش والإساءة اللفظية، فضلا عن أشكال التخويف الأخرى.
- 2.9 يجب اتخاذ الخطوات اللازمة لمنع الحوادث والإصابات المضرة بالصحة و الناجمة عن سير العمل أو المرتبطة به أو بحدوثه، وذلك عن طريق تقليل أسباب المخاطر الكامنة في بيئة العمل إلى أدنى حد ممكن عمليا.
- 2.10 يجب أن تفي الأجور والمزايا المدفوعة لأسبوع عمل قياسي ، كحد أدنى، بالمعايير القانونية الوطنية أو المعايير القياسية للصناعة. ينبغي أن تكون الأجور كافية لتلبية الاحتياجات الأساسية .
- 2.11 يجب أن تتوافق ساعات العمل مع القوانين الوطنية والمعايير القياسية للصناعة، أيهما يوفر حماية أكبر .وينبغي أن لا تتجاوز ساعات العمل 48 ساعة في الأسبوع) 8 ساعات في اليوم. (
- 2.12 يزود العمال بيوم عطلة واحد على الأقل لكل 7 أيام عمل.
- 2.13 يحق لجميع العمال الحصول على عقد عمل يكون مكتوبا بلغة يفهمونها.
- 2.14 يتلقى العمال تدريباً منتظماً وموثقاً في مجال الصحة والسلامة، ويتم تكرار هذا التدريب للعمال الجدد.
- 2.15 ضمان إمكانية الوصول إلى المراحيض النظيفة والمياه الصالحة للشرب ،وينبغي توفير المرافق الصحية لتخزين الأغذية عند الحاجة.
- 2.16 يجب أن تكون أماكن الإقامة نظيفة وأمنة وجيدة التهوية ، ويتوفر فيها المراحيض النظيفة والمياه الصالحة للشرب.
- 2.17 لا ينبغي إجراء أي خصومات من الأجور كإجراء تأديبي.

### 3 . الظروف البيئية:

- 3.1 ينبغي ان لا يسهم إنتاج واستخراج المواد الخام اللازمة للإنتاج في تدمير الموارد وقاعدة الدخل للسكان المهمشين ،كالمطالبة بمساحات كبيرة من الأراضي أو موارد طبيعية أخرى يعتمد عليها هؤلاء السكان.
- 3.2 يجب اتخاذ كافة التدابير البيئية في الاعتبار خلال سلسلة الإنتاج والتوزيع التي تبدأ بإنتاج المواد الخام إلى ان يتم بيعها الى المستهلك. يجب الاخذ بعين الاعتبار الجوانب البيئية المحلية والإقليمية والعالمية. يجب ان لا يتم استغلال البيئة المحلية في موقع الإنتاج أو تعريضها التلوث.
- 3.3 يجب احترام التشريعات واللوائح البيئية الدولية والوطنية.
- 3.4 يجب ادارة المواد الكيميائية والمواد الخطرة الأخرى بعناية وفقا لإجراءات السلامة الموثقة.

نحن الموقعون أدناه ، نؤكد بأننا ملتزمون بجميع القوانين واللوائح المعمول بها ، ونلتزم بالمعايير الأخلاقية كما هو مذكور أعلاه أو نوافق بشكل إيجابي على هذه المعايير الأخلاقية ونحن على استعداد لتنفيذ التغييرات اللازمة في المنظمة.

التاريخ:

اسم المفاوض/الشركة:

اسم الممثل:

التوقيع:



## BOQs for Construction of latrines

### جدول كميات إنشاء حمامات طارئة للنازحين من الصفائح المعدنية

Item No.	Description of work	Unit	Quantity	Unit cost (USD)	Total cost USD	Remark
TOR	<p>على المقاول المتقدم تقديم العينات لجميع المواد لاعتمادها من قبل المهندس المشرف في مكتب المنظمة بعد توقيع العقد مباشرة و قبل استلام المواقع في حالة ان المقاول قام بتركيب اي مواد غير معنده مسبقا فسيقوم بإزالتها و على نفقته الخاصه. الثمن لاي بند يشمل كل ما يلزم من مواد و أعمال للتنفيذ والتركيب و التشغيل وانهاء العمل على اكمل وجه , طبقاً للمواصفات وتعليمات المهندس المشرف.</p> <p>The contractor should submit samples for all the materials which to be used in the project in order to approve it by the engineer in NRC office during the first week after signing of contract directly and before process of handing over of the site, in case of the contractor installed any unproved materials, he will remove it at his own expense. The price of any item includes all necessary materials and works to complete the work according to the specifications and instructions of the supervisor.</p> <p>Note: supplying and installing duple steel board in the branch of road that go to tank and painting intervention data and logos to be read from both side ; according to drawing, specifications and instructions of the supervising engineer.</p> <p>ملاحظة : يتم توريد وتركيب لوحة حديدية مدبلة تثبت بمكعبات خرسانية في مدخل الفرع المؤدي إلى الموقع يكتب فيها أسم المشروع واسم وشعار المنظمة والممول وعام التنفيذ من الجهتين بحسب الرسومات والمواصفات وتعليمات المهندس المشرف.</p>					
1	<p>Digging and settling the natural land of the site of the latrine (1.2 * 1.2) m and digging the positions of steel Poles by (0.25X0.25)m and 0.6m deep for each column of the four-column and the doing of all the necessary and as directed by the supervising engineer.</p> <p>حفر وتسوية الأرض الطبيعية لموقع الحمام بإبعاد (1.2 * 1.2) م مع حفر مواقع تثبيت وإساسات الأعمدة المعدنية بأبعاد (0.25 * 0.25)م وبعمق 0.6 م لكل عمود من الأربعة العمدان وعمل كافة ما يلزم حسب الأصول الفنية وتوجيهات المهندس المشرف.</p>	LS	1.44			
2	<p>Supply, installation, fixing &amp; cutting of the galvanized hollow iron columns where the section of the column is 4x4x600cm and painted with a resistant coating for the four columns. The length of the front columns is 2.7 m with the length of the installation is 0.5 m in the ground with plain concrete. the length of the rear columns is 2.5 m with the length of the installation is 0.5 m. Ensuring consistency, parallelization, and working as a pest, according to the technical requirements and guidance of the supervisor engineer.</p> <p>توريد وتركيب وتثبيت وقص قظبان الحديد المجلفن المفرغه بأبعاد مقطع 4*8سم وذات طول 600سم والمطلية بطلاء مقاوم للصدأ للأربعة الأعمدة بحيث يكون طول الأعمدة الامامية 2.7م وطول التثبيت 0.5 م في الأرض بخرسانه عادية وطول الأعمدة الخلفية 2.5 م وطول التثبيت 0.5 م في الأرض بخرسانه عادية مع ضمان تعامدها وتوازنها وعمل كافة ما يلزم حسب الأصول الفنية وتوجيهات المهندس المشرف.</p>	Pcs عدد	2			
3	<p>Supply, installation, fixed, and cutting of horizontal supports between the columns that must be made from galvanized hollow iron tube and painted with a resistant coating. The dimensions of the section are 2x4x600cm. The supports shall be for the three sides of the latrine and each side shall have three horizontal supports with the same length and parallelization. According to the technical requirements and guidance of the supervisor.</p> <p>توريد وتركيب وتثبيت وقص مدادات التدعيم الأفقية بين الأعمدة من قظبان الحديد المجلفن مفرغه ومطلية بطلاء مقاوم للصدأ بحيث تكون ابعاد المقطع 2.5*5سم وطول 600سم والتدعيم يكون للجوانب الثلاثة للحمام وفي كل جانب ثلاث تدعيمات مع ضمان تعامدها وتوازنها مع تجهيز ميل السقف في التدعيم العلوي وعمل كافة ما يلزم حسب الأصول الفنية وتوجيهات المهندس المشرف.</p>	Pcs عدد	3			
4	<p>Supply, installation &amp; cutting white hunger plate (100x600 cm) and fix it on a steel frame for all sides and roof by bolts with water resistance rubber with three bolts for every one meter on the steel frame and the doing of all the necessary and as directed by the supervising engineer.</p> <p>بالعدد : توريد وتركيب وقص صفائح تغطيه معدنيه بيضاء موجه بتدرج 35 و ابعاد 600*100سم وسمك 0.28 مم وتثبيتها على الهيكل المعدني من كل الجهات مع السقف وبمسامير تثبيت مع الربلات المانعة لتخلل المياه وتوزيع على الاقل ثلاثة مسامير لكل متر على الهيكل المعدني وعمل كافة ما يلزم بحسب توجيهات المهندس المشرف.</p>	Pcs عدد	2			

## BOQs for Construction of latrines

### جدول كميات إنشاء حمامات طارئة للنازحين من الصفائح المعدنية

Item No.	Description of work	Unit	Quantity	Unit cost (USD)	Total cost USD	Remark
5	Supply and install well of Arabic toilet bowls (from the good type) made from ceramic and do all requirements that needed as specification and do the work of all the necessary and as directed by the supervising engineer. توريد وتركيب كرسي عربي بورسلان مقاس 40*51سم لزوم الحمام وتركيبه جيدا بحيث يمنع أي روائح وعمل كافة ما يلزم من كوع ريحة UPVC قطر 4" انش و غيره وعمل كافة ما يلزم بحسب توجيهات المهندس المشرف.	Pcs عدد	1			
6	Supply and installation of plain concrete (1:2:4) mixture for the bathroom floor with a thickness of 10cm with extending 10cm for every side that matches the toilet bowls so that the water of the bathroom shall be discharged to the Arabic toilet bowls, and the doing of all the necessary and as directed by the supervising engineer. توريد وتركيب خرسانة عادية بنسبه خلط (1:2:4) لارضية الحمام بسماكة 10سم m و بروز 10سم من كل جوانب الحمام و بحيث يكون تصريف ارضية الحمام الى الكرسي العربي وعمل عوازل مياه في الحواف الداخلية للارضية وعمل كافة ما يلزم بحسب توجيهات المهندس المشرف.	M2	1.95			
7	Supply and installation of pipes (UPVC) 4-inch diameter & 5 mm depth to extend the sewage from the latrines to the location of the hole and And the appropriate proportions and the work of the ventilation line of the bathroom behind 2 meters of the natural ground by connecting the pipe with UPVC shape y diameter 4 inches including the drilling of the pipes in the depth of the appropriate down to the work and all necessary according to the technical assets and guidance supervisor engineer. مقطوعية :توريد وتركيب شبكه التصريف من الحمام الى البياره من انابيب صرف UPVC قطر 4" انش و 5مم سماكه بمجموع اطوال لايزيد عن 6م وبالميوول المناسبه وعمل خط تهويه مع غطاء للتهويه من خلف الحمام بارتفاع 2م من الارض الطبيعيه بواسطه توصيله ربط انابيب ( سنجل ) UPVC شكل y قطر 4" انش شاملا الحفر للانابيب بالعمق المناسب وصولا الى البياره وعمل كافة مايلزم بحسب الاصول الفنية وتوجيهات المهندس المشرف	LS	1			
8	Supply and installation of iron doors for the bathroom (1.9 * 0.9) m excellent, where must be made from galvanized hollow iron painted with a resistant coating to the dust also includes the installation of the door bolts, hinges and installed in the latrine, and the doing of all the necessary and as directed by the supervising engineer. توريد وتثبيت باب حديد للحمام (0.8*1.7) م من قظبان حديد مجلفن مفرغه ذات السماكه 1مم لزوك هيكل الباب ومفصلات تعليق شكل T عدد 2 ومغالق سحب معدنيه ( هندرام ) داخلية وخارجية وعمل كافة ما يلزم وحسب توجيهات المهندس المشرف .	عدد/NO	1			
9	Digging the pit in any type of soil with a diameter of 1 m and a depth of 2 m and the work of all necessary according to the technical assets and directions supervisor بالمتر المكعب : حفر فتحه البياره في اي نوع من انواع التربة بقطر 1م وعمق 2م وعمل كافة مايلزم بحسب الاصول الفنية وتوجيهات المهندس المشرف	M3	2			
10	Supply and erection plain concrete min reinforcement 1.4x1.4m as a cover for a pit that and the doing of all the necessary and as directed by the supervising engineer. عمل غطاء خرساني خفيف التسليح لفتحة البياره بسماكه 10 سم و ابعاد 1.4*1.4 وعمل كافة مايلزم بحسب الاصول الفنية وتوجيهات المهندس المشرف	m2	2			



## BOQs for Construction of latrines

### جدول كميات إنشاء حمامات طارئة للنازحين من الصفائح المعدنية

Item No.	Description of work	Unit	Quantity	Unit cost (USD)	Total cost USD	Remark
11	Supply and installation of a light solar system consisting of 10-watt solar panel, 7 Amp battery, and 5 watts light bulb with a switch, wire, and all related items to complete the work as per the specification of the supervising engineer. توريد وتركيب منظومة إضاءة للحمام مكونة من لوح شمسي 10 وات وبطارية 7 أمبير ولمبة 5 وات مع سلك التوصيل وفيش وجميع ما يلزم لإنجاز البند بحسب أصول العمل وتعليمات المهندس المشرف	LS مقطوعة	1			
12	Supplying and installing a metal plate with dimensions of 60 x 30 cm and thickness of 0.5 mm, painted in white and then printed with the logo of the organization and the donor according to the colors and specifications in the drawings attached and are installed with screws no less than ten screws on one of the walls of the bathroom in the right direction with the work of all necessary to accomplish the item According to the work assets and instructions of the supervisor توريد وتركيب لوحة معدنية بأبعاد 60 × 30 سم وبسمكة 0.5 مم يتم طلاؤها باللون الأبيض ثم يطبع عليها شعار المنظمة والمانح بحسب الألوان والمواصفات في الرسومات المرفقة ويتم تثبيتها بمسامير دريل لا تقل عن عشرة مسامير على إحدى جدران الحمام بالاتجاه المناسب مع عمل جميع ما يلزم لإنجاز البند بحسب أصول العمل وتعليمات المهندس المشرف	No.	1			
13	Transportation and install it to wherever in Al Dalee	Latrine				
	النقل والتركيب لأي مديرية في الضالع					
	Transportation and install it to wherever in Taiz	Latrine				
	النقل والتركيب لأي مديرية في تعز					
	Transportation and install it to wherever in Lahj	Latrine				
	النقل والتركيب لأي مديرية في لحج					
	Transportation and install it to wherever in Aden	Latrine				
	النقل والتركيب لأي مديرية في عدن					
	Transportation and install it to wherever in Amran	Latrine				
	النقل والتركيب لأي مديرية في عمران					
13	Transportation and install it to wherever in Hodiedah	Latrine				
	النقل والتركيب لأي مديرية في الحديدة					
13	Transportation and install it to wherever in Hajjah	Latrine				
	النقل والتركيب لأي مديرية في حجة					
Grand total cost / الإجمالي الكلي						
Grand total cost / الإجمالي الكلي						
نسبة ومبلغ التخفيض إن وجد / decrease percentage if avlicable ( % )						
Grand total cost after the decrease / الإجمالي الكلي بعد التخفيض						

tender's Application

Name:.....

Phone NO:.....

Signituer:

the stamp:

مقدم العطاء

الاسم /.....

رقم التليفون :.....

التوقيع /.....

الختم /.....



**BOQs for supply and installation of handwashing for latrines**  
**جدول كميات توريد وتركيب مغاسل يد لحمامات النازحين محلية الصنع**

Item No.	Description of work	Unit	Quantity	Unit cost (USD)	Total cost USD	Remark
TOR	<p>على المقاول المتقدم تقديم العينات لجميع المواد لاعتمادها من قبل المهندس المشرف في مكتب المنظمة بعد توقيع العقد مباشرة وقبل استلام المواقع في حالة ان المقاول قام بتركيب اي مواد غير معمده مسبقا فسيقوم بازالتها و على نفقته الخاصه. الثمن لاي بند يشمل كل ما يلزم من مواد و أعمال للتنفيذ والتركيب والتشغيل وانهاء العمل على اكمل وجه , طبقاً للمواصفات وتعليمات المهندس المشرف.</p> <p>The contractor should submit samples for all the materials which to be used in the project in order to approve it by the engineer in NRC office during the first week after signing of contract directly and before process of handing over of the site, in case of</p>					
1	<p>Supply and installation of handwashing facility consisting of:</p> <ul style="list-style-type: none"> <li>- Plastic container with a handle at the top, the capacity of ten liters, easy to open and close excellent quality.</li> <li>- Water tap that is well fixed under the water bear</li> <li>- Plastic dish soap holder that is installed on the bathroom wall</li> </ul> <p>The price includes the supply, installation, and installation of the water container and the soap holder on the bathroom wall from the inside according to the drawings shown and according to the instructions of the supervising engineer.</p> <p>توريد وتركيب مغسلة يد محلية الصنع تتكون من            - دبة مياه بلاستيك ذات يد في الاعلى سعة عشرة لتر سهلة الفتح والاغلاق نوعية ممتازة .            - حنفية مياه يتم تثبيته جيدا اسفل دبة المياه            - حمام صابون غسيل بلاستيكي يتم تثبيته على جدار الحمام            الثمن يشمل التوريد والتركيب والتثبيت لدبة المياه وحامل الصابون على جدار الحمام من الداخل وفقا للرسومات الموضحة ووفقا لتعليمات المهندس المشرف.</p>	LS مقطوعة	1			
2	Transportation and install it to wherever in Al Dalee	Latrine				
	النقل والتركيب لاي مديرية في الضالع	Latrine				
	Transportation and install it to wherever in Taiz	Latrine				
	النقل والتركيب لاي مديرية في تعز	Latrine				
	Transportation and install it to wherever in Lahj	Latrine				
	النقل والتركيب لاي مديرية في لحج	Latrine				
	Transportation and install it to wherever in Aden	Latrine				
	النقل والتركيب لاي مديرية في عدن	Latrine				
	Transportation and install it to wherever in Amran	Latrine				
	النقل والتركيب لاي مديرية في عمران	Latrine				
	Transportation and install it to wherever in Hodiedah	Latrine				
	النقل والتركيب لاي مديرية في الحديدة	Latrine				
	Transportation and install it to wherever in Hajjah	Latrine				
	النقل والتركيب لاي مديرية في حجة	Latrine				
Grand total cost / الاجمالي الكلي						
Grand total cost / الاجمالي الكلي						
نسبة ومبلغ التخفيض ان وجد / decrease percentage if avlicable ( % )						
Grand total cost after the decrease / الاجمالي الكلي بعد التخفيض						

tender's Application

Name:.....

Phone NO:.....

Signituer:

the stamp:

مقدم العطاء

الاسم / .....

رقم التليفون: .....

التوقيع / .....

الختم / .....



# Annex 1-B Technical drawing



NORWEGIAN  
REFUGEE COUNCIL

إنشاء حمامات معدنية طارئة  
Construction of emergency latrines

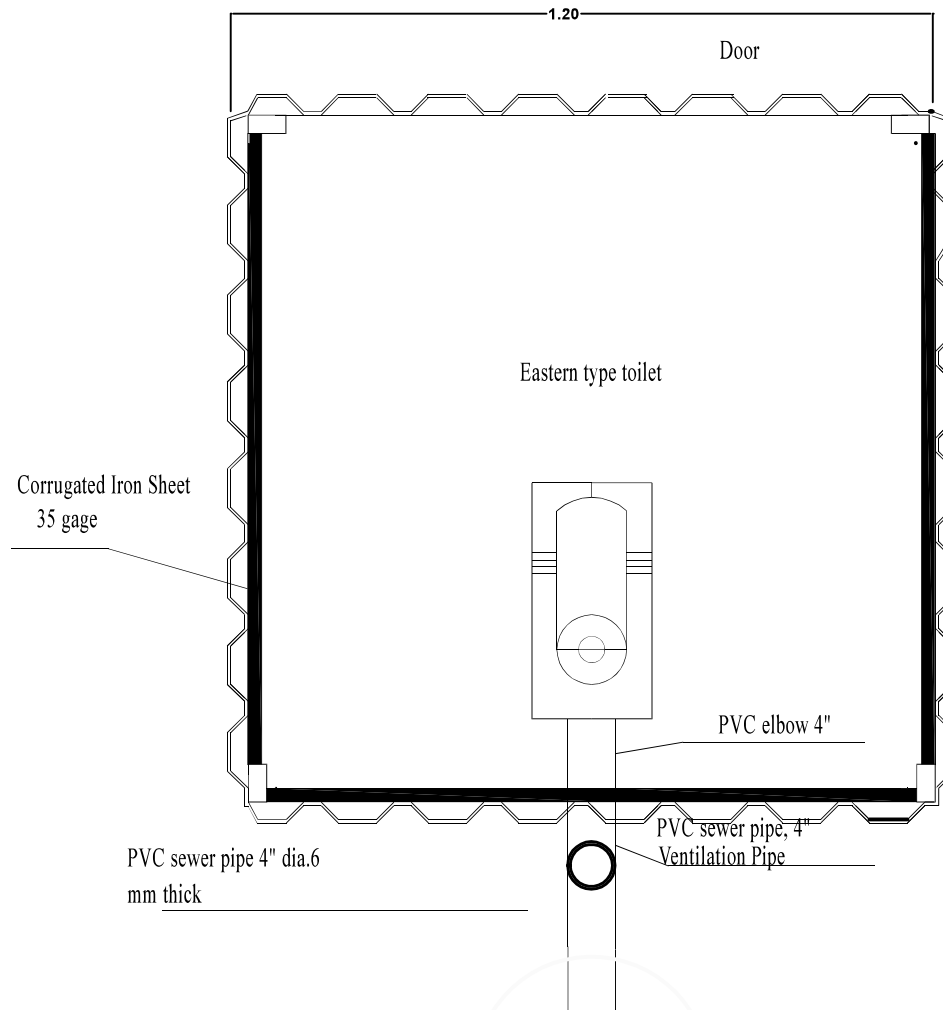
ملاحظة  
يجب على المقاول زيارة موقع المشروع قبل  
تقديمه للعطاء للاطلاع على المشروع وموقعه وطبيعة  
العمل

The contractor must visit sit of the  
projects before applying his tender .

Name **PLAN FOR LATRINE**

Type NO : 1

Scale : FIT Date 2020





NORWEGIAN  
REFUGEE COUNCIL

إنشاء حمامات معدنية طارئة  
Construction of emergency latrines

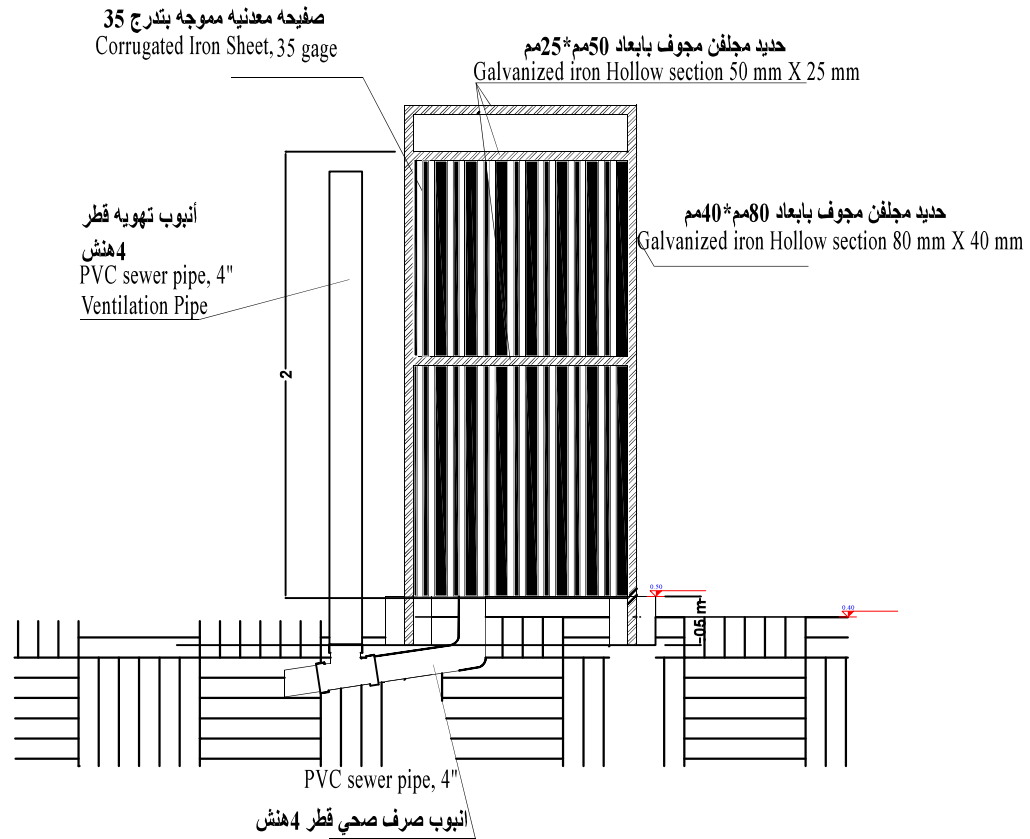
ملاحظة  
يجب على المقاول زيارة موقع المشروع قبل  
تقديمه للعطاء للاطلاع على المشروع وموقعه وطبيعة  
العمل

The contractor must visit sit of the  
projects before applying his tender .

Name SECTION 1

Type NO : 2

Scale : FIT Date 2020



# Annex 1-B Technical drawing



NORWEGIAN  
REFUGEE COUNCIL

إنشاء حمامات معدنية طارئة  
Construction of emergency latrines

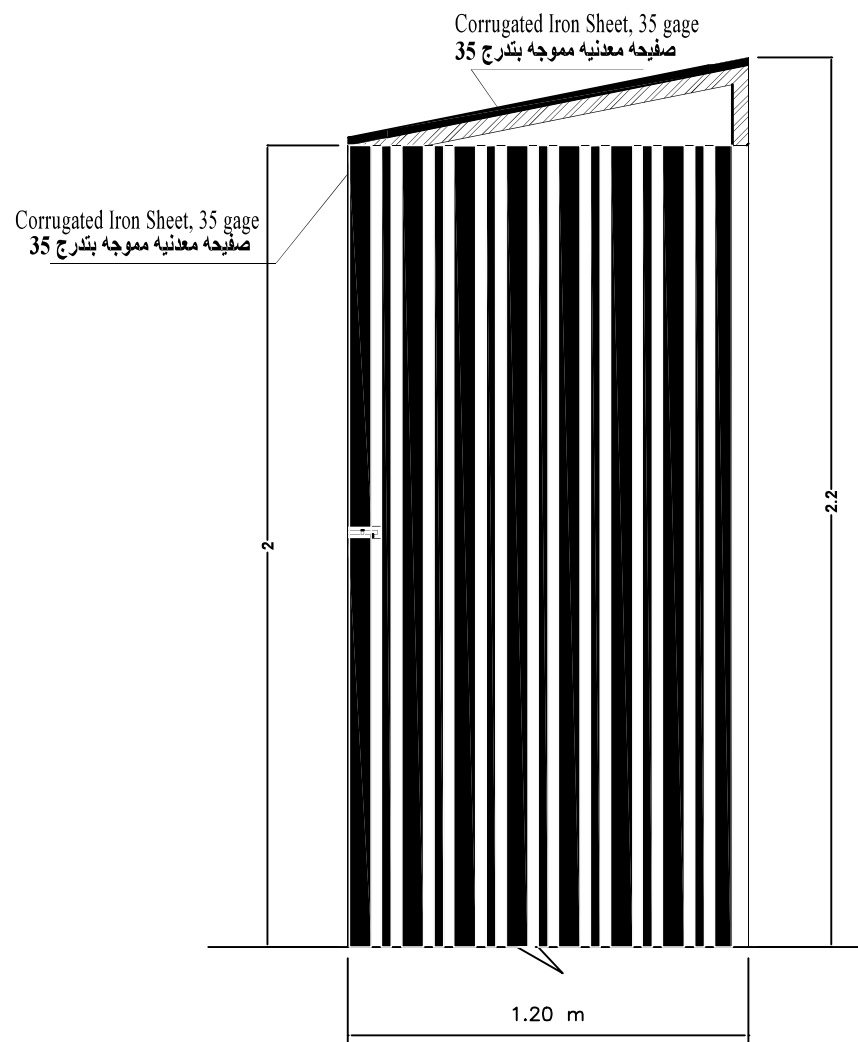
ملاحظة  
يجب على المقاول زيارة موقع المشروع قبل  
تقديمه للعطاء للاطلاع على المشروع وموقعه وطبيعة  
العمل

The contractor must visit sit of the  
projects before applying his tender .

Name SECTION 2

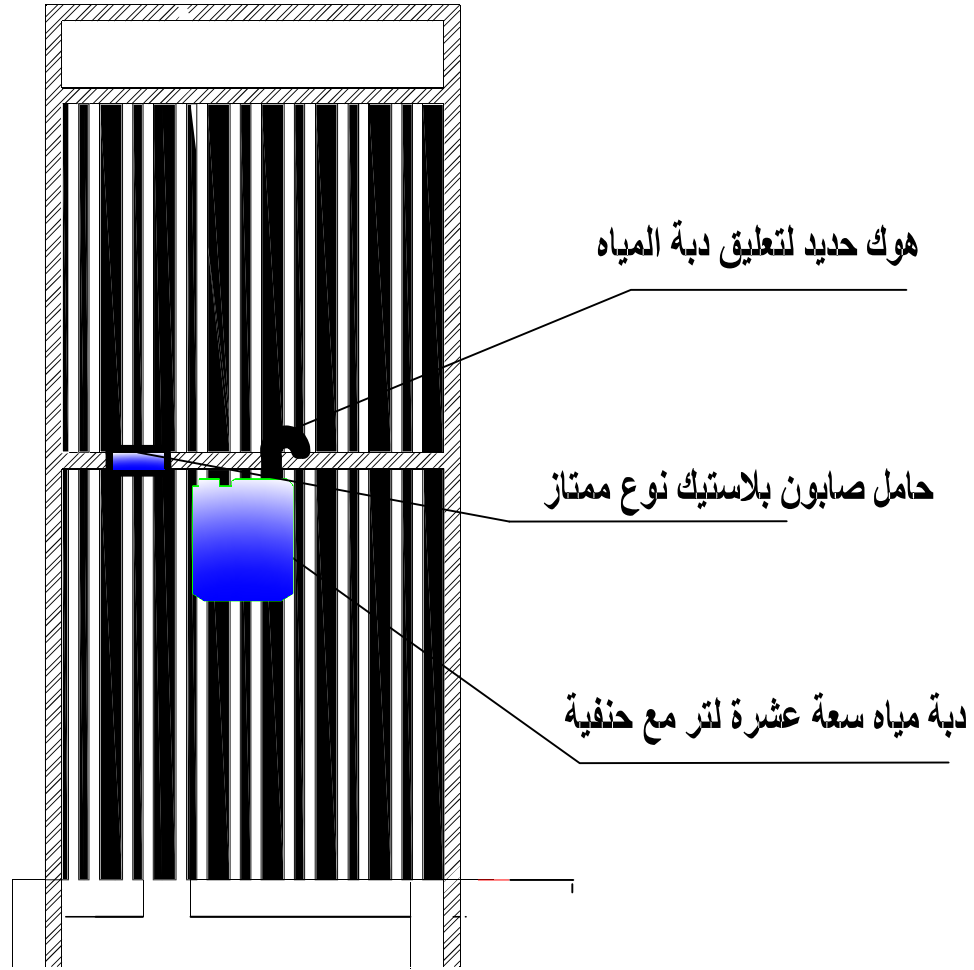
Type NO : 3

Scale : FIT Date 2020





NORWEGIAN  
REFUGEE COUNCIL



ملاحظة

يجب على المقاول زيارة موقع المشروع قبل  
تقديمه للعطاء للاطلاع على المشروع وموقعه وطبيعة  
العمل

The contractor must visit sit of the  
projects before applying his tender .

Name **HAND WASHING - B**


Type NO : 1

Scale : FIT Date 2020

	<div><div><div>NRC</div><div>المجلس النرويجي للاجئين</div></div><div><div>Norwegian Refugee Council (NRC)</div><div>Construction of Communal Latrines for disabled with Hand Washing Station and Solar Light</div><div>بناء حمامات خاصة للمعاقين مزودة بمحطة لغسيل اليدين وإضاءة تعمل بالطاقة الشمسية</div></div></div>						
Item No.	DETAILS	التفصيل	UNIT الوحدة	QUANTITY الكمية	UNIT COST سعر الوحدة	TOTAL COST الاجمالي	Note ملاحظات
1	Leveling the natural land of the site of the bathroom (3.7 * 1.7) m and digging the positions of steel Poles by (0.3X0.3)m and 0.4m deep for each column of the eight columns and the doing of all the necessary and as directed by the supervising engineer.	تسوية الارض الطبيعية لموقع الحمام بابعاد (3.7 * 1.7) م مع حفر مواقع تثبيت وإساسات الأعمدة المعدنية بابعاد (0.3 * 0.3)م وبعمق 0.4 م لكل عمود من الثمانية اعمدة وعمل كافة ما يلزم حسب الأصول الفنية وتوجيهات المهندس المشرف.	LS مقطوعة	1			
2	Supplying, installing, fixing and cutting hollow galvanized iron bars with section dimensions 4 * 8 cm and a length of 600 cm and coated with rust-resistant paint for 8 columns include concrete bases with dimension 30*30*40 cm so that the length of the front columns is 270 cm and the length of the installation is 40 cm in the ground with normal plan concrete and the length of the back and outer columns is 240 cm and the length of the installation is 40 cm in the ground with plan concrete with ensuring its orthogonality and parallelism, and making sure that it is necessary according to the technical principles and the directions of the supervising engineer.	توريد وتركيب وتثبيت وقص قضبان الحديد المجلفن المفرغه بابعاد مقطع 4*8سم وذات طول 600سم والمطلية بطلاء مقاوم للصدأ لعدد 8 عمود شامل الصبة للقواعد لكل عمود بابعاد 30*30*40 سم بحيث يكون طول الأعمدة الامامية لواجهة الحمام 270 سم وطول التثبيت 40 سم في الارض بخرسانته عادية وطول الأعمدة الخلفية والخارجية 240 م وطول التثبيت 40 م في الارض بخرسانته عادية مع ضمان تعامدها وتوازيها وعمل كافة ما يلزم حسب الأصول الفنية وتوجيهات المهندس المشرف.	Pcs عدد	4			
3	Supply, installation, Fixing and cutting of horizontal reinforcement purlins between columns of hollow galvanized iron bars and coated with anti-rust paint so that the dimensions of the section are 2.5 * 5 cm and the length of 600 cm, provided that it is cut with a length of 130 cm for the supports for the inner part of the latrine and a length of 170 cm for the outer barrier for the foreign latrine The welding shall be for the three sides of the bathroom, the two sides of outer place, and on each side there are three supports and a row of handles made of 130 cm in length from a 1-inch-2-millimeter iron pipe for people with special needs, and welded to a height of 0.8 meters on both sides of the bathroom as shown in the drawings, while ensuring its perpendicularity and parallel to the processing of the roof inclination In the upper support and make all the necessary according to the technical principles and the directions of the supervising engineer.	توريد وتركيب وتثبيت وقص مدادات التدعيم الافقية بين الأعمدة من قضبان الحديد المجلفن مفرغه ومطلية بطلاء مقاوم للصدأ بحيث تكون ابعاد المقطع 2.5*5سم و طول 600سم على أن تقص بعرض 130 سم للتدعيمات للجزء الداخلي للحمام ويعرض 170 سم للسترة الخارجية الجانبية للحمام الأجنبي و التدعيم يكون للجوانب الثلاثة للحمام وجانبي السترة وفي كل جانب ثلاث تدعيمات وعمل صف مقابض بطول 130 سم من أنبوب حديد 1 انش سماكة 2 ملي لذوي الاحتياجات الخاصة ,وتلحيمة على ارتفاع 0.8 متر على جانبي الحمام كما هو موضح بالرسومات مع ضمان تعامدها وتوازيها مع تجهيز ميل السقف في التدعيم العلوي وعمل كافة ما يلزم حسب الأصول الفنية وتوجيهات المهندس المشرف.	Pcs عدد	5.5			
4	supply, installation & cuting white hunger plate (100x600 cm) and fix it on steel fram for all sides and roof by bolts with water resistance rubber with three bolts for Each one meter on steel fram and the doing of all the necessary and as directed by the supervising engineer.	بالعدد : توريد وتركيب وقص صفائح تغطيه معدنيه بيضاء مموجه بتدرج 35 و ابعاد 100*600سم وسمك 0.28 مم وتثبيتها على الهيكل المعدني من كل الجهات مع السقف وبمسامير تثبيت مع الربلات المانعه لتخلل المياه ويتوزع ثلاثة مسامير لكل متر على الهيكل المعدني وعمل كافة ما يلزم بحسب توجيهات المهندس المشرف.	Pcs عدد	3.5			

	<div><div><div>NRC</div><div>المجلس النرويجي للاجئين</div></div><div><div>Norwegian Refugee Council (NRC)</div><div>Construction of Communal Latrines for disabled with Hand Washing Station and Solar Light</div><div>بناء حمامات خاصة للمعاقين مزودة بمحطة لغسيل اليدين وإضاءة تعمل بالطاقة الشمسية</div></div></div>						
Item No.	DETAILS	التفصيل	UNIT الوحدة	QUANTITY الكمية	UNIT COST سعر الوحدة	TOTAL COST الاجمالي	Note ملاحظات
5	Supply and installation of French lavatory size 40*60 cm for the disabled . The bathroom is needed and installed well in order to prevent any odors and work as a pest with the necessary UPVC elbow diameter of 4 inches and other and do all the necessary according to the instructions of the supervising engineer.	توريد وتركيب كرسي افرنجي للمعاقين بورسلان مقاس 40*60سم لزوم الحمام وتركيبه جيدا بحيث يمنع أي روائح وعمل كافة ما يلزم بحسب توجيهات المهندس المشرف.	Pcs عدد	1.0			سيتم تركيب احد البندين فقط حسب رغبة المستفيد ( اما حمام افرنجي أو كرسي عربي مع كرسي جلوس للمعاق )
6	Supply and installation well of Arabic toilet bowls (good type) made from ceramic with supplying seating chair that has a hole for the disabled to be placed above the Arab toilet and be with a height of 50 cm excellent quality with circular stainless steel bars on both sides of the Arabic toilet. The length of each bar is 70 cm and height is 80 cm to help the disabled sit on the chair. and rust-resistant and do all requirements that needed as specification and do the work of all the necessary and as directed by the supervising engineer	توريد وتركيب كرسي عربي بورسلان مقاس 40*51سم لزوم الحمام وتركيبه جيدا بحيث يمنع أي روائح وعمل كافة ما يلزم من كوع ريحة UPVC قطر "4" أنش مع توريد كرسي جلوس بفتحة للمعاقين يوضع فوق الكرسي العربي ويكون بارتفاع 50 سم نوعية ممتازة ومقاومة للصدأ مع قضبان استيل دائرية الشكل ضد الصدأ على جانبي الكرسي العربي. طول كل قضيب 70سم وبارتفاع 80سم لمساعدة المعاق على الجلوس فوق الكرسي وعمل كافة ما يلزم بحسب توجيهات المهندس المشرف.	Pcs عدد	1.0			
7	Supply and installation of light reinforced concrete 5 bars of 10 mm diameter in both directions with a mixing ratio (1: 2: 4) for the bathroom floor with a thickness of 10 cm m and extend of 10 cm from all sides of the bathroom with a work so that the bathroom floor is drained to floor trap and the work of water insulators in the inner edges of the floor with work Ramp with slope 1:10 for the entry of people with special needs to the forgin Lavatories and do all the necessary according to the directions of the supervising engineer.	توريد وتركيب خرسانة مسلحة تسليح خفيف 5 اسياخ قطر 10 ملي في الاتجاهين بنسبه خلط ( 1:2:4 ) لارضية الحمام بسماكة 10 سم وبروز 10سم من كل جوانب الحمام مع عمل بحيث يكون تصريف ارضية الحمام الى الصفاية وعمل عوازل مياه في الحواف الداخلية للارضية مع عمل رامب بميول 1:10 لدخول ذوي الاحتياجات الخاصة للحمامات الافرنجية وعمل كافة ما يلزم بحسب توجيهات المهندس المشرف.	m2	6.3			
8	Supply and installation of pipes (UPVC) 4 inch diameter & 3.2 mm depth to extend the sewage from the latrines to the location of the hole with length not exceed 4 m and the appropriate proportions and the work of the ventilation line of the bathroom behind 2 meters of natural ground by connecting the pipe with UPVC shape y diameter "4 inch including the drilling of the pipes in the depth of the appropriate down to the work and all necessary according to the technical assets and guidance supervisor engineer.	مقطوعية : توريد وتركيب شبكة التصريف من الحمام الى البيارة من انابيب صرف UPVC قطر "4" انش و 3.2مم سماكه بمجموع اطوال لايزيد عن 4 م وبالميول المناسبه وعمل خط تهويه من خلف الحمام بارتفاع 2.4م من الارض الطيعيه بواسطه توصيله ربط انابيب ( سنجل ) UPVC شكل y قطر "4" انش شاملا الحفر للانابيب بالعمق المناسب وصولا الى البيارة وعمل كافة مايلزم بحسب الاصول الفنية وتوجيهات المهندس المشرف	مقطوعية LS	1.0			
9	supply and installation of iron doors for the bathroom (1.7 * 0.8) m excellent, where must be made from galvanized holow iron painted with a resistant coatingto the dust also includes the installation of the door bolts, hinges and installed in the bathroom with clothes handles at least 4 from the inner side of the door , and the doing of all the necessary and as directed by the supervising engineer.	توريد وتثبيت باب حديد للحمام (0.8*1.7) م من قظبان حديد مجلفن مفرغه ذات السماكه 1مم لزوك هيكل الباب مع تغطية الباب ب صفيحة معدنيه بيضاء مموجه بتدرج 40 ومفصلات تعليق شكل Tعدد 2 ومغاليق سحب معدنيه) هندراب ( داخلية وخارجية مع عمل تعليقة ملايس سعة 4 علاقات على الاقل على الوجه الداخلي للباب كما هو موضح بالرسومات وعمل كافة ما يلزم وحسب توجيهات المهندس المشرف .	عدد/NO	1.0			

	<div><div><div>NRC</div><div>المجلس النرويجي للاجئين</div></div><div><div>Norwegian Refugee Council (NRC)</div><div>Construction of Communal Latrines for disabled with Hand Washing Station and Solar Light</div><div>بناء حمامات خاصة للمعاقين مزودة بمحطة لغسيل اليدين وإضاءة تعمل بالطاقة الشمسية</div></div></div>						
Item No.	DETAILS	التفصيل	UNIT الوحدة	QUANTITY الكمية	UNIT COST سعر الوحدة	TOTAL COST الاجمالي	Note ملاحظات
10	In cubic meters: Digging the hole in any type of soil with a diameter of 1 m and a depth of 3 m and level the soil around latrine and the work of all necessary according to the technical assets and directions supervisor	بالمتر المكعب : حفر فتحه البياره في اي نوع من انواع التربة بقطر 1م وعمق 3م وتسوية ناتج الحفر حول الحمام وعمل كافة مايلزم بحسب الاصول الفنية وتوجيهات المهندس المشرف	m3	2.5			
11	square meter: supply and erection plain concret min renifrcement 1.4x1.4m 10 cm thick with reinforcement bars 12mm diameter every 15 cm in each direction as a cover for pit that and the doing of all the necessary and as directed by the supervising engineer	عمل غطاء خرساني خفيف التسليح لفتحة البياره بسماكه 10 سم و ابعاد 1.4*1.4م واسياخ حديدية قطر 12 مم كل 15 سم بالاتجاهين وعمل كافة مايلزم بحسب الاصول الفنية وتوجيهات المهندس المشرف	m2	1			
12	Wash basin By the number: Supply and installation of a wash basin with a pedestal, a hanging type, a radius of 35 cm, in the required white color, with the faucet, and all water drainage pipes and connections of a diameter of 2 inches, and the drainage to 4-inch drainage pipes, according to the specifications and instructions of the supervising engineer.	حوض غسيل بالعدد: توريد وتركيب حوض غسيل لليدين نوع تعليق زاويه نصف قطره 35 سم باللون الابيض المطلوب مع الحنفية و جميع مواسير وتوصيلات تصريف الماء قطر 2 انش والتصريف حتى انايبب تصريف 4 انش طبقا للمواصفات وتعليمات المهندس المشرف.	Pcs	1			
13	Supply and installation of a 200 liter polyethylene tank, two layers white with an iron base of 3 * 3 cm, thickness of 2 mm and a diameter of the tank and a height of 1.2 m from the ground. It includes the installation of 3/4 inch pipes from the tank to the bathroom siphon and the hand wash basin with good installation of pipes in addition to a spigot 0.5 inch copper inside the bathroom and printing the organization and support logo on the tank	توريد وتركيب خزان بوليثلين 200 لتر طبقتين ابيض اللون مع قاعدة حديدية من الحديد الشلمن 3*3سم وسمك 2 مم وبقطر الخزان وارتفاع 1.2م من الارض ويشمل تركيب مواسير 3/4 انش من الخزان الى سيفون الحمام وحوض غسيل اليدين مع التثبيت الجيد للمواسير بالاضافه الى حنفية نحاس 0.5 انش داخل الحمام وطباعة شعار المنظمة والداعم على الخزان	LS مقطوعة	1			
14	Supply and installation of light solar system consisting of 10 watt solar panel, 7 Amp battery and 5 watt light bulb with switch, wire and all related items to complete the work, the solar panle will be put on the roof and the light bulb will be put on the mideal of the ceiling and the battery on a welded shelf on the latrine fram as per the specification of the superving engineer.	توريد وتركيب منظومة إضاءة للحمام مكونه من لوح شمسي 10 وات وبطارية 7 امبير ولمبة 5 وات مع سلك التوصيل وفيش وجميع ما يلزم لانجاز البند بحيث يتم تثبيت اللوح الشمسي على سقف الحمام ويتم وضع اللبة في منتصف السقف ووضع البطارية على رف علوي ملحم بهيكل الحمام كما هو مبين بحسب اصول العمل وتعليمات المهندس المشرف	LS مقطوعة	1.0			

	<div style="display: flex; justify-content: space-between; align-items: center;"> <div style="text-align: center;">   المجلس النرويجي لللاجئين </div> <div style="text-align: center;"> <b>Norwegian Refugee Council (NRC)</b>  <b>Construction of Communal Latrines for disabled with Hand Washing Station and Solar Light</b>  <b>بناء حمامات خاصة للمعاقين مزودة بمحطة لغسيل اليدين وإضاءة تعمل بالطاقة الشمسية</b> </div> </div>						
Item No.	DETAILS	التفصيل	UNIT الوحدة	QUANTITY الكمية	UNIT COST سعر الوحدة	TOTAL COST الاجمالي	Note ملاحظات
15	Supplying and installing a metal plate with dimensions of 30 x 150 cm and thickness of 0.5 mm, painted in white and then printed with the logo of the organization and the donor according to the colors and specifications in the drawings attached and are installed with screws no less than ten screws on one of the walls of the bathroom in the right direction with the work of all necessary to accomplish the item According to the work assets and instructions of the supervisor	توريد وتركيب لوحة معدنية بأبعاد 30 x 150سم وبسمكة 0.5 مم يتم طلاؤها باللون الابيض ثم يطبع عليها شعار المنظمة والمانح بحسب اللالوان والمواصفات في الرسومات المرفقه ويتم تثبيتها بمسامير دريل لا تقل عن عشرة مسامير على إحدى جدران الحمام بالاتجاه المناسب مع عمل جميع ما يلزم لانجاز البند بحسب أصول العمل وتعليمات المهندس المشرف	عدد/NO	1			
	Transportation and install it to wherever in Al Dalee	النقل وتركيب لاي مديرية في الضالع	حمام latrine				
	Transportation and install it to wherever in Taiz	النقل وتركيب لاي مديرية في تعز	حمام latrine				
	Transportation and install it to wherever in Lahj	النقل وتركيب لاي مديرية في لحج	حمام latrine				
	Transportation and install it to wherever in Aden	النقل وتركيب لاي مديرية في عدن	حمام latrine				
	Transportation and install it to wherever in Amran	النقل وتركيب لاي مديرية في عمران	حمام latrine				
	Transportation and install it to wherever in Hodiedah	النقل وتركيب لاي مديرية في الحديدة	حمام latrine				
	Transportation and install it to wherever in Hajjah	النقل وتركيب لاي مديرية في حجة	حمام latrine				
Grand total cost / الاجمالي الكلي							
Grand total cost / الاجمالي الكلي							

tender's Application

Name:.....

Phone NO.:.....

Signituer:

the stamp:

مقدم العطاء

الاسم /.....

رقم التلغون:.....

التوقيع /.....

الختم /.....



## General TOR for Communal latrine construction with hand washing and solar light

### المواصفات العامة لتنفيذ أعمال بناء لحمامات مشتركة تحتوي على مغاسل وطاقة شمسية

تنفيذ أعمال بناء لحمامات مشتركة تحتوي على مغاسل وطاقة شمسية Communal latrine construction with hand washing and solar light	
تعليمات عامه :	General Instructions
<p>- يجب على المقاول زيارة الموقع والتوصل إلى الوضوح في جداول الكميات والرسومات الخاصة بأعمال إعادة التأهيل قبل التسعير وتقديم جداول الكميات المسعرة والتأكد من الوصول إلى المواقع الجغرافية ومقارنة الأعمال المطلوبة مع الرسومات و الكميات.</p> <p>- جميع البنود المذكورة في جداول الكميات ويجب تنفيذها مع كل ما يلزم لإنهاء العمل على أكمل وجه ووفقاً للرسومات والمواصفات والتعليمات لمهندس المشرف.</p>	<p>- The contractor shall visit the site and get clarity on mentioned on BoQs and drawings of rehabilitation works before pricing and submitting RFQs to make sure the access and geographical of site locations in comparing with drawings and BoQs.</p> <p>- All items mentioned in BoQs should be implemented with all necessary to finish the work to the fullest and according to the drawings and specifications and instructions of the supervisor engineer.</p>
تنفيذ أعمال بناء لحمامات مشتركة تحتوي على مغاسل وطاقة شمسية Communal latrine construction with hand washing and solar light	
<p>تسوية الأرض الطبيعة لموقع الحمام بأبعاد (3.7 * 1.7) م مع حفر مواقع تثبيت واساسات الاعمدة المعدنية بأبعاد (0.3 * 0.3)م وبعمق 0.4 م لكل عمود من الثمانية اعمدة وعمل كافة ما يلزم حسب الأصول الفنية وتوجيهات المهندس المشرف.</p>	<p>Leveling the natural land of the site of the bathroom (3.7 * 1.7) m and digging the positions of steel Poles by (0.3X0.3)m and 0.4m deep for each column of the eight columns and the doing of all the necessary and as directed by the supervising engineer.</p>
<p>توريد وتركيب وتثبيت وقص قضبان الحديد المجلفن المفرغه بأبعاد مقطع 8*4سم وذات طول 600سم والمطلوبه بطلاء مقاوم للصدأ لعدد 8 عمود شامل الصبة للقواعد لكل عمود بأبعاد 30*30*40 سم بحيث يكون طول الاعمدة الامامية لواجهة الحمام 270 سم وطول التثبيت 40 سم في الأرض بخرسانه عادية وطول الاعمدة الخلفية والخارجية 240 م وطول التثبيت 40 م في الأرض بخرسانه عادية مع ضمان تعامدها وتوازيها وعمل كافة ما يلزم حسب الأصول الفنية وتوجيهات المهندس المشرف.</p>	<p>Supplying, installing, fixing and cutting hollow galvanized iron bars with section dimensions 4 * 8 cm and a length of 600 cm and coated with rust-resistant paint for 8 columns include concrete bases with dimension 30*30*40 cm so that the length of the front columns is 270 cm and the length of the installation is 40 cm in the ground with normal plan concrete and the length of the back and outer columns is 240 cm and the length of the installation is 40 cm in the ground with plan concrete with ensuring its orthogonality and parallelism, and making sure that it is necessary according to the technical principles and the directions of the supervising engineer.</p>
<p>توريد وتركيب وتثبيت وقص مدادات التدعيم الأفقية بين الاعمدة من قضبان الحديد المجلفن مفرغه ومطلوبه بطلاء مقاوم للصدأ بحيث تكون ابعاد المقطع 2.5*5سم وطول 600سم على ان تقص بعرض 130 سم للتدعيمات للجزء الداخلي للحمام وبعرض 170 سم للسيرة الخارجية الجانبية للحمام الافرنجي والتدعيم يكون للجوانب الثلاثة للحمام وجاني الستره وفي كل جانب ثلاث تدعيمات وعمل صف مقابض بطول 130 سم من انبوب حديد 1 انش سماكة 2 ملي لذوي الاحتياجات الخاصه ,وتلحيمة على ارتفاع 0.8 متر على جانبي الحمام كما هو موضح بالرسومات مع ضمان تعامدها وتوازيها مع تجهيز ميل السقف في التدعيم العلوي وعمل كافة ما يلزم حسب الأصول الفنية وتوجيهات المهندس المشرف.</p>	<p>Supply, installation, Fixing and cutting of horizontal reinforcement purlins between columns of hollow galvanized iron bars and coated with anti-rust paint so that the dimensions of the section are 2.5 * 5 cm and the length of 600 cm, provided that it is cut with a length of 130 cm for the supports for the inner part of the latrine and a length of 170 cm for the outer barrier for the foreign latrine The welding shall be for the three sides of the bathroom, the two sides of outer place, and on each side there are three supports and a row of handles made of 130 cm in length from a 1-inch-2-millimeter iron pipe for people with special needs, and welded to a height of 0.8 meters on both sides of the bathroom as shown in the drawings, while ensuring its perpendicularity and parallel to the processing of the roof inclination In the upper support and make all</p>

**General TOR for Communal latrine construction with hand washing and solar light**

المواصفات العامة لتنفيذ اعمال بناء حمامات مشتركة تحتوي على مغاسل وطاقة شمسية

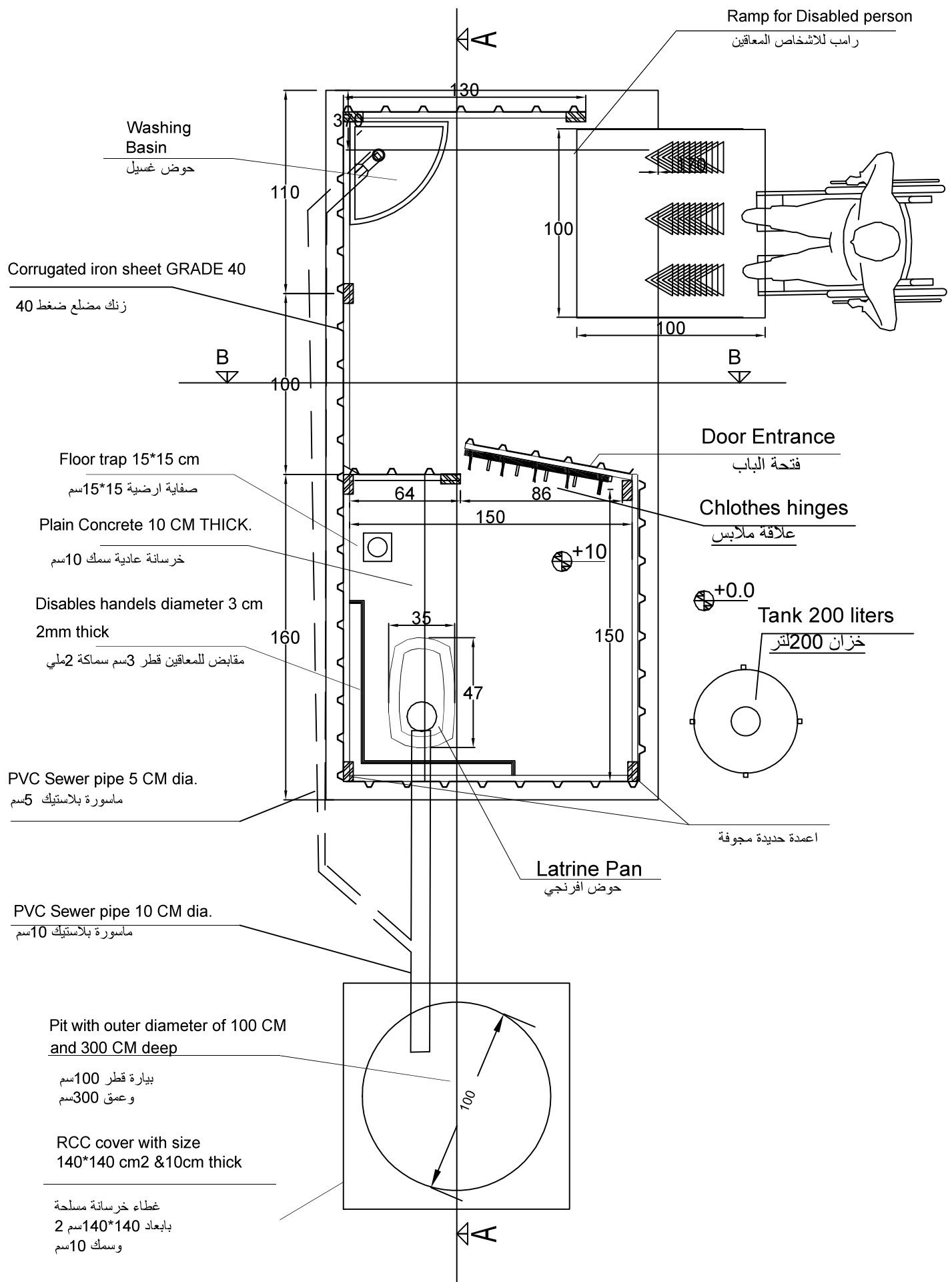
the necessary according to the technical principles and the directions of the supervising engineer.	
supply, installation & cutting white hunger plate (100x600 cm) and fix it on steel frame for all sides and roof by bolts with water resistance rubber with three bolts for Each one meter on steel frame and the doing of all the necessary and as directed by the supervising engineer.	بالعدد : توريد وتركيب وقص صفائح تغطيه معدنيه بيضاء مموجه بتدرج 40 و ابعاد 100*600سم وسمك 0.28 مم وتثبيتها على الهيكل المعدني من كل الجهات مع السقف وبمسامير تثبيت مع الربلات المانعه لتخلل المياه وبتوزيع ثلاثه مسامير لكل متر على الهيكل المعدني وعمل كافة ما يلزم بحسب توجيهات المهندس المشرف.
Supply and installation of an Arabic or French lavatory for the disabled from porcelain size 51 * 40 cm. The bathroom is needed and installed well in order to prevent any odors and work as a pest with the necessary UPVC elbow diameter of 4 inches and other and do all the necessary according to the instructions of the supervising engineer.	توريد وتركيب كرسي افرنجي للمعاقين بورسلان مقاس 51*40سم لزوم الحمام وتركيبه جيدا بحيث يمنع أي روائح وعمل كافة ما يلزم من كوع ريشة UPVC قطر 4 انش و غيره وعمل كافة ما يلزم بحسب توجيهات المهندس المشرف.
Supply and installation of light reinforced concrete 5 bars of 10 mm diameter in both directions with a mixing ratio (1: 2: 4) for the bathroom floor with a thickness of 10 cm m and extend of 10 cm from all sides of the bathroom with a work so that the bathroom floor is drained to floor trap and the work of water insulators in the inner edges of the floor with work Ramp with slope 1:10 for the entry of people with special needs to the foreign Lavatories and do all the necessary according to the directions of the supervising engineer.	توريد وتركيب خرسانة مسلحة تسليح خفيف 5 اسياخ قطر 10 ملي في الاتجاهين بنسبه خلط (1:2:4) لارضية الحمام بسماكة 10 سم m وبروز 10سم من كل جوانب الحمام مع عمل بحيث يكون تصريف ارضية الحمام الى الصفاية وعمل عوازل مياه في الحواف الداخلية للارضية مع عمل رامب بميل 1:10 لدخول ذوي الاحتياجات الخاصه للحمامات الافرنجية وعمل كافة ما يلزم بحسب توجيهات المهندس المشرف.
Supply and installation of pipes (UPVC) 4 inch diameter & 3.2 mm depth to extend the sewage from the latrines to the location of the hole with length not exceed 4 m and the appropriate proportions and the work of the ventilation line of the bathroom behind 2 meters of natural ground by connecting the pipe with UPVC shape y diameter "4 inch including the drilling of the pipes in the depth of the appropriate down to the work and all necessary according to the technical assets and guidance supervisor engineer.	مقطوعية : توريد وتركيب شبكة التصريف من الحمام الى البياره من انابيب صرف UPVC قطر 4 انش و 3.2مم سماكة بمجموع اطوال لايزيد عن 4 م وبالميل المناسب وعمل خط تهويه من خلف الحمام بارتفاع 2.4م من الارض الطبيعى بواسطه توصيله ربط انابيب ( سنجل ) UPVC شكل y قطر 4 انش شاملا الحفر للانابيب بالعمق المناسب وصولا الى البياره وعمل كافة مايلزم بحسب الاصول الفنية وتوجيهات المهندس المشرف
supply and installation of iron doors for the bathroom (1.7 * 0.8) m excellent, where must be made from galvanized hollow iron painted with a resistant coating to the dust also includes the installation of the door bolts, hinges and installed in the bathroom with clothes handles at least 4 from the inner side of the door , and the doing of all the necessary and as directed by the supervising engineer.	توريد وتثبيت باب حديد للحمام (1.7*0.8) م من قطبان حديد مجلفن مفرغه ذات السماكة 1مم لزوك هيكل الباب مع تغطية الباب ب صفيحه معدنيه بيضاء مموجه بتدرج 35 ومفصلات تعليق شكل T عدد 2 ومغالق سحب معدنيه ( هندراب ) داخلية وخارجية مع عمل تعليقة ملابس سعة 4 علاقات على الاقل على الوجه الداخلي للباب كما هو موضح بالرسومات وعمل كافة ما يلزم وحسب توجيهات المهندس المشرف .

### General TOR for Communal latrine construction with hand washing and solar light

المواصفات العامة لتنفيذ أعمال بناء حمامات مشتركة تحتوي على مغاسل وطاقة شمسية

In cubic meters: Digging the hole in any type of soil with a diameter of 1 m and a depth of 3 m and level the soil around latrine and the work of all necessary according to the technical assets and directions supervisor	بالمتر المكعب : حفر فتحة البياض في اي نوع من انواع التربة بقطر 1م وعمق 3م وتسوية ناتج الحفر حول الحمام وعمل كافة مايلزم بحسب الاصول الفنية وتوجيهات المهندس المشرف
square meter: supply and erection plain concrete light reinforcement 1.4x1.4m 10 cm thick as a cover for pit that and the doing of all the necessary and as directed by the supervising engineer	عمل غطاء خرساني خفيف التسليح لفتحة البياض بسماكة 10 سم و ابعاد 1.4*1.4 وعمل كافة مايلزم بحسب الاصول الفنية وتوجيهات المهندس المشرف
By the number: Supply and installation of a wash basin with a pedestal, a hanging type, a radius of 35 cm, in the required white color, with the faucet, and all water connections of a diameter of 2 inches, and the drainage to 4-inch drainage pipes, according to the specifications and instructions of the supervising engineer.	بالعدد: توريد وتركيب حوض غسيل اللبدين نوع تعليق زاوية نصف قطره 35 سم باللون الابيض المطلوب مع الحنفية و جميع توصيلات الماء قطر 2 انش والتصريف حتى انابيب تصريف 4 انش طبقاً للمواصفات وتعليمات المهندس المشرف.
Supply and installation of a 200 liters polyethylene tank, two layers white with an iron base of 3 * 3 cm, thickness of 2 mm and a diameter of the tank and a height of 1.2 m from the ground. It includes the installation of 3/4 inch pipes from the tank to the bathroom siphon and the hand wash basin with good installation of pipes in addition to a spigot 0.5 inch copper inside the bathroom and printing the organization and support logo on the tank	توريد وتركيب خزان بوليثلين 200 لتر طبقتين ابيض اللون مع قاعدة حديدية من الحديد الشلمن 3*3سم وسمك 2 مم وبقطر الخزان وارتفاع 1.2م من الارض ويشمل تركيب مواسير 4/3 انش من الخزان الى سيفون الحمام وحوض غسيل اللبدين مع التثبيت الجيد للمواسير بالاضافة الى حنفية نحاس 0.5 انش داخل الحمام وطباعة شعار المنظمة والداعم على الخزان
Supply and installation of light solar system consisting of 10-watt solar panel, 7 Amp battery and 5-watt light bulb with switch, wire and all related items to complete the work, the solar panel will be put on the roof and the light bulb will be put on the medial of the ceiling and the battery on a welded shelf on the latrine frame as per the specification of the supervene engineer.	توريد وتركيب منظومة إضاءة للحمام مكونه من لوح شمسي 10 وات وبطارية 7 امبير ولمبة 5 وات مع سلك التوصيل وفيش وجميع ما يلزم لانجاز البند بحيث يتم تثبيت اللوح الشمسي على سقف الحمام ويتم وضع اللمبة في منتصف السقف ووضع البطارية على رف علوي ملحوم بهيكل الحمام كما هو مبين بحسب أصول العمل وتعليمات المهندس المشرف
Supplying and installing a metal plate with dimensions of 30 x 150 cm and thickness of 0.5 mm, painted in white and then printed with the logo of the organization and the donor according to the colors and specifications in the drawings attached and are installed with screws no less than ten screws on one of the walls of the bathroom in the right direction with the work of all necessary to accomplish the item According to the work assets and instructions of the supervisor	توريد وتركيب لوحة معدنية بأبعاد 30 × 150 سم وبسماكة 0.5 مم يتم طلاؤها باللون الابيض ثم يطبع عليها شعار المنظمة والمانح بحسب الالوان والمواصفات في الرسومات المرفقه ويتم تثبيتها بمسامير دريل لا تقل عن عشرة مسامير على إحدى جدران الحمام بالاتجاه المناسب مع عمل جميع ما يلزم لانجاز البند بحسب أصول العمل وتعليمات المهندس المشرف

# Annex 2-C Technical drawing.



## Annex 2-C Technical drawing.

